

This Data Sheet Includes Information On

Frigidaire

• Product Model Number (s): •

Frigidaire Series Electric Oven(s):
FEB30T7DC, FEB30T6DC, FEB30T6DS, FEB30T6DQ,
FEB30T6DB, FEB30T5DB, FEB30T5DS and
FEB30T5DC

• Dimensions (Actual Size) •

Cutout width: 28 1/2"

Cutout height: 48 7/8"

Cutout depth: 23 1/2"

Minimum cabinet width: 30 1/8"

Rec. cutout location from floor : 11 1/2"

Distance from face of cabinet to
outer edge of open doors (Door swing): 21"

Distance from face of cabinet to
front of closed door handle: 1"

Overall unit width: 30"

Overall unit height: 50 7/16"

Penetration into cabinet: 23 1/2"

Oven overlap distances when using
cutout dimensions listed above:

Top overlap: 1 1/16"

Bottom overlap: 1/2"

Right side overlap: 3/4"

Left side overlap: 3/4"

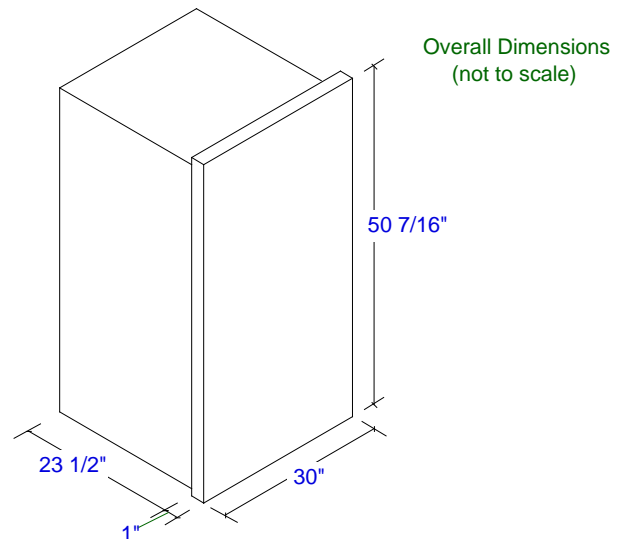
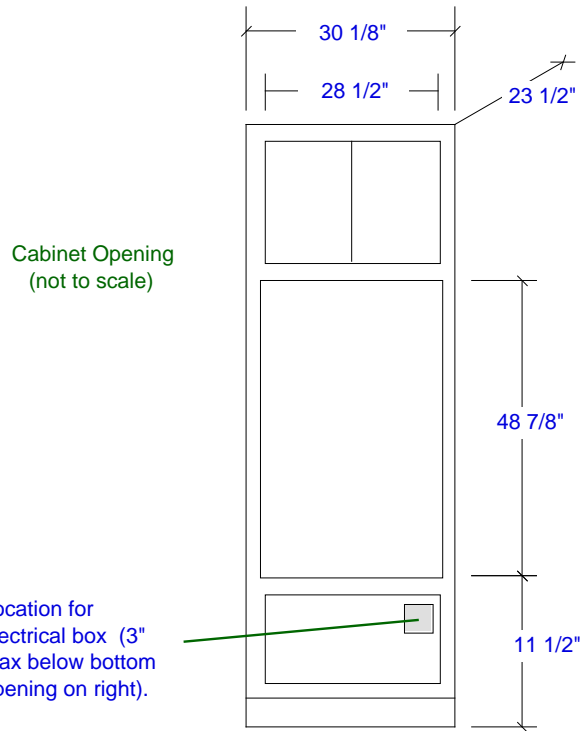
• Additional Information •

- **IMPORTANT** : 1 1/2" minimum top overlap clearance is recommended.
- **IMPORTANT** : 2" minimum bottom overlap clearance is recommended.
- Maximum cutout width is 29", adjust your overlaps accordingly.
- Maximum cutout height is 49 7/8", adjust your overlaps accordingly.
- **Power Supply**: This oven is designed to be connected to either 120/240 volts (total connected load 6.9/ 28.3 amps) or 120/208 volts (total connected load 5.2/25 amps), 3 wire, single phase, 60Hz., A.C. Requires 40 Ampere circuit. 66" armored electrical cable included.
- Oven base must be capable of supporting 300 lbs.
- Unit can be installed in a cutout which is greater than 49 7/8" high. Optional kit is required for this installation, contact manufacturer for additional information.

Subject to change without notice. This system is designed to be updated daily if necessary. Dimension Express is not responsible for use of superseded, voided, or outdated data sheets. Because of the difficulty or impracticability of determining actual damages, liability of Dimension Express shall not exceed \$50.00.

Copyright © Dimension Express, 2007.

213



• NEVER reuse Data Sheets. Data Sheets are subject to change without notice. Dimension Express is a FREE service bureau and is updated daily, it makes far more sense to spend the time necessary to request new Data Sheets for each project, as opposed to the problems, time, costs, and risks associated with reusing old Data Sheets.

- Call Dimension Express if you have any questions at (800) 940-2059 •
- Always refer to a current Code at a Glance or manufacturer directory •
- Data Sheet codes change on the first of each quarter at 12:01am •

BN • A213 • • 071209 • 165311 • 59820