

FERGUSON[®]
Bath, Kitchen & Lighting Gallery



Showroom Selections

LIZ ASTAIRE
APPLIANCES - Specifications

Jacqueline Santana
2202 Broadway
Santa Monica, CA 90404
(310) 829-1062
jacqueline.santana@ferguson.co

Table of Contents

Table of Contents	2
Kitchen	3
Gaggenau Single Electric Wall Oven BO480611	3
Sub-Zero Side-by-Side Refrigerator BI-36/S/S/TH	4
Miele Induction Cooktop 26637562USA	6
Zephyr Insert AK9234AS	14
Fisher & Paykel Drawer Type DD24DCHTX9_N	16
Miele Induction Cooktop 26632052USA	18
Miele Gas Cooktop 27101253USA	25
Laundry	31
Electrolux Front Load Washer EFLW427UIW	31
Electrolux Electric Dryer EFME427UIW	34

Gaggenau Single Electric Wall Oven BO480611



Controls on top

Right-hinged

BO 480 611

Stainless steel-backed full glass door
Width 30" (76 cm)

Left-hinged

BO 481 611

Stainless steel-backed full glass door
Width 30" (76 cm)

Included accessories

- 1 baking tray, pyrolytic-safe enamel
- 1 rotisserie spit
- 1 wire rack
- 1 broiling tray with wire rack
- 1 core temperature probe

Installation accessories

BA 478 110

Optional handle, stainless steel
Length 14 7/16"

Optional accessories

BA 018 165

Pull-out system
Enameled cast-iron frame and fully extendable telescopic rails.

BA 028 115

Baking tray, enameled
1" deep.

BA 038 165

Wire rack, chromium-plated
Offset rack, no opening.

BA 058 115

Heating element
Necessary accessory for baking stone
BA058133.

BA 058 133

Baking stone
With support and pizza peel (heating element must be ordered separately).

BS 020 002

Pizza peel, additional set of 2.

GN 340 230

Gastronorm roaster
Non-stick cast-aluminum
4" deep, with 2 1/2" lid, GN 3/4.

400 series single oven

BO 480/BO 481

- Handleless door/automatic door opening
- Pyrolytic self-cleaning system
- Universal heating system with 17 heating modes, with core temperature probe, rotisserie spit and baking stone operation
- TFT touch display
- Electronic precision temperature control from 85°F to 550°F
- Net volume 4.5 cu.ft.
- Star-K certified.

Cooking modes

Convection.
Economy convection.
Top + bottom heat.
Top + 1/2 bottom heat.
Top heat.
1/2 top + bottom heat.
Bottom heat.
Convection + bottom heat.
Convection + 1/2 bottom heat.
Convection broiling.
Broiling.
Economy broiling.
Baking stone operation.
Roaster operation.
Dough proofing.
Defrosting.
Keeping warm.

Operation

Automatic door opening.
Rotary knob and TFT touch display operation.
Clear text display in 25 languages.
Option to save 50 individual recipes (incl. core temperature probe).
Information key with use indicators.
Side-opening door opens up to 180° angle.

Features

Core temperature probe with automatic shut-off function.
Rotisserie spit.
Baking stone outlet.
Actual temperature display.
Super-quick preheating.
Timer functions: cooking time, switch-off time, short-term timer, stop watch, Sabbath mode.
60 W halogen light on the top.
2x 10 W halogen light on the side.
Enamel wire racks on the side with 5 rack levels, pyrolytic-safe.

Safety

Thermally insulated door with quadruple glazing.
Child lock.
Safety lock.
Cooled housing with temperature protection.

Cleaning

Pyrolytic self-cleaning.
Gaggenau clean-enamel.
Heated air cleaning catalyst.

Planning notes

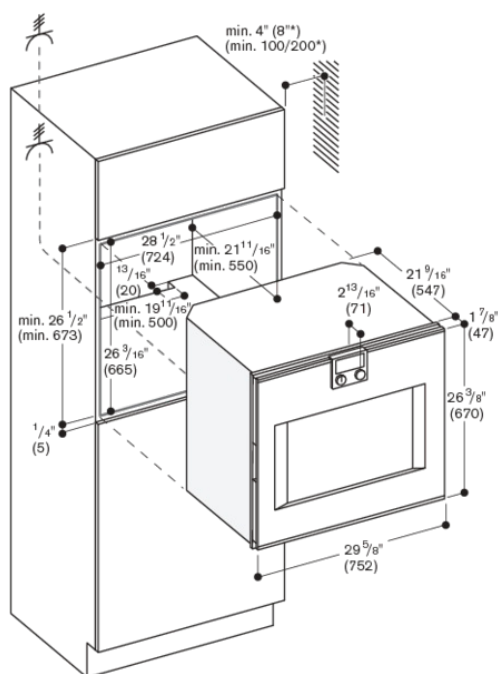
Door hinge not reversible.
The front of the appliance extends 1 3/8" from the cabinet front.
When handle (optional accessory) is installed, the outer edge of the door handle extends 3 13/16" from the cabinet front.

Consider the overhang, incl. the door handle, when planning to open drawers next to the appliance.
Plan a gap of at least 3/16" between the appliance and adjacent cabinets.
When planning a corner solution, pay attention to the 90° door opening angle.
To achieve the 21 9/16" installation depth, the connecting cable needs to follow the slanted edge on the lower right hand corner of the housing. The plug needs to be planned outside of the cut-out niche.

Please read the installation details regarding air openings on pages 12 – 13.

Rating

Total rating: 5.52 kW.
Total Amps: 25 A.
208/220–240 V / 60 Hz
Plan for a 5' connecting cable (hardwire required).



* 8" (200) is minimum distance requirement in order to use pull-out system BA 018 105 and when installed with handle.

Numbers indicated
inside parenthesis () = mm



36" BUILT-IN SIDE-BY-SIDE REFRIGERATOR/FREEZER

SUB-ZERO

BI-36S/S



FEATURES

- Dual refrigeration keeps food fresher longer
- Air purification system fights spoilage, odors
- Crispers and deli drawers in low-temp, high-humidity zones for optimum freshness
- Microprocessor control assures peak performance
- Water-filtration system for ice reduces contaminants, chlorine taste and odor
- Freshness cards for maximum food preservation
- Rigorously tested in our U.S. manufacturing facilities to ensure at least 20 years of heavy use
- Exceptional 24/7 support from our Customer Care team based in Madison, Wisconsin and just footsteps from our factory
- *Soft bright* interior lighting
- Magnetic door seal system locks in cold air
- Automatic ice maker with *max ice* feature
- Adjustable shelves for maximum convenience

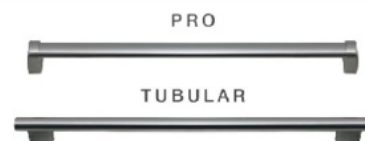
ACCESSORIES

- Side panel in white or stainless steel
- Stainless steel kickplate
- Grilles for 83" or 88" finished height (84" is standard)
- Side panel mounting kit
- Dual installation kit with or without dual wide grille—84" finished height
- Dozen egg container
- Replacement air purification cartridge and water filter

Accessories are available through an authorized Sub-Zero dealer. For local dealer information, visit subzero-wolf.com/locator.



HANDLE OPTIONS



PRODUCT DETAILS

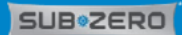
REFRIGERATOR

- 4 Adjustable glass shelves
- 1 Stationary glass shelf
- 1 High-humidity drawer
- 2 Storage drawers
- 3 Adjustable door shelves
- 2 Stationary door shelves
- Adjustable dairy compartment

FREEZER

- 3 Adjustable wire shelves
- 1 Stationary solid shelf
- 3 Storage drawers
- 5 Adjustable door shelves
- Automatic ice maker

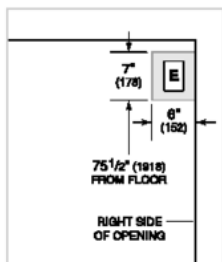
36" BUILT-IN SIDE-BY-SIDE REFRIGERATOR/FREEZER



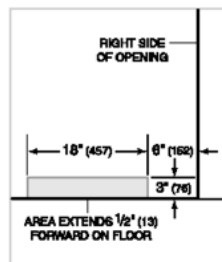
PRODUCT SPECIFICATIONS

Model	BI-36S/S
Dimensions	36"W x 84"H x 24"D
Door Clearance	22 1/4"
Weight	538 lb
Refrigerator Capacity	12.4 cu ft
Freezer Capacity	8.2 cu ft
Electrical Supply	115 VAC, 60 Hz
Electrical Service	15 amp circuit
Plumbing Supply	1/4" OD copper, braided stainless steel or PEX tubing
Plumbing Pressure	35–120 psi

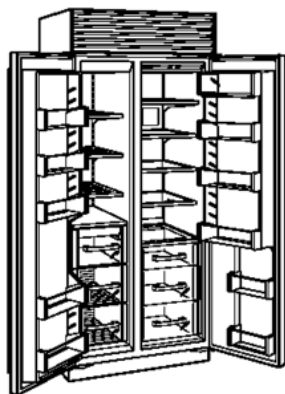
ELECTRICAL



PLUMBING

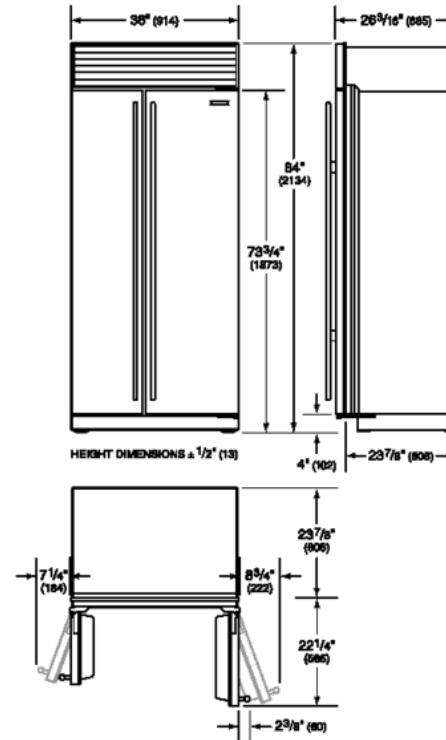


INTERIOR VIEW

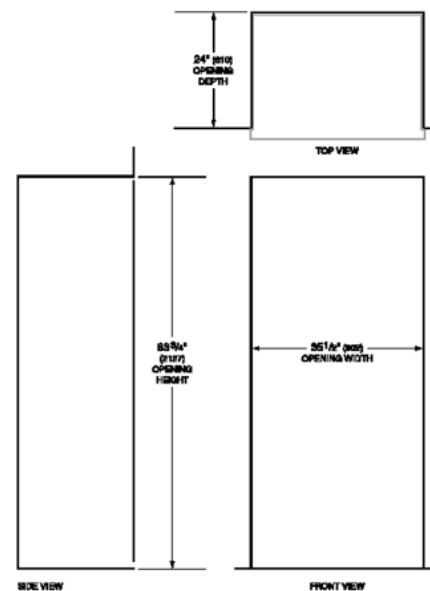


This illustration is intended for interior reference only and may not represent the exterior of the model being specified.

DIMENSIONS



STANDARD INSTALLATION

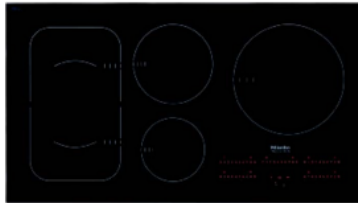


NOTE: Dashed line represents profile of unit.



36" Flush-Mounted Induction Cooktop KM 6375

Miele



Features:

- 5 cooking zones
 - (1) vario zone of 4-6"
 - (1) vario zone of 5½-8"
 - (2) vario zones of 6-9"
 - (1) vario zone of 7-11"
- (1) PowerFlex zone — PowerFlex technology combines two zones into a unique large zone (9x15"), up to 7,7kW
- TwinBooster function
- Con@ctivity 2.0 — communication between cooktop and hood
- Direct Selection Plus controls, default power level 1-9, extended 1-12
- Stop&Go function
- Keeping Warm function
- Auto heat-up
- Pan size recognition
- Timer
- Overheating protection
- Child safety lock and safety switch-off

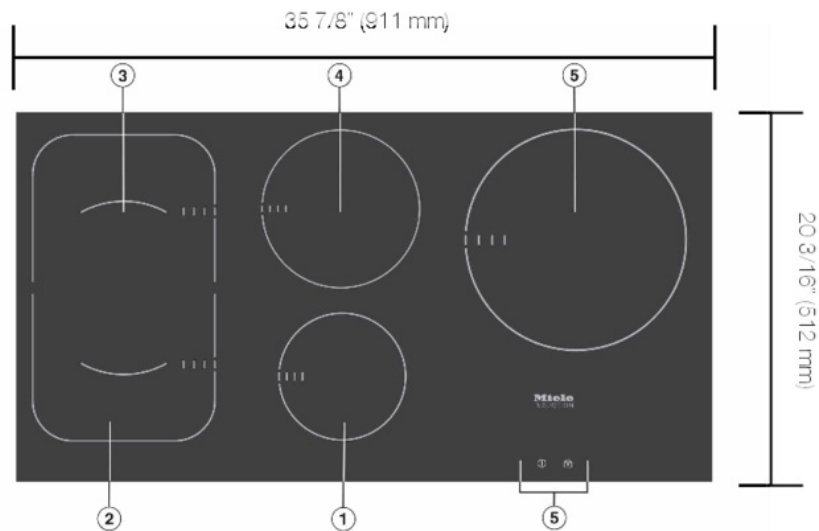
SPECIFICATIONS	
KM 6375 Induction Cooktop	Item 26637562USA
Product Dimensions	35 ⁷ / ₈ " (911 mm) W x 4 ³ / ₄ " (121 mm) H x 20 ⁹ / ₁₆ " (512 mm) D
Cut-out Dimensions	35" (889 mm) W x 19 ⁵ / ₁₆ " (490 mm) D
Minimum Back Spacing From Wall	2" (50 mm)
Minimum Countertop Thickness	1 ¹ / ₈ " (29 mm)
Maximum Countertop Thickness	1 ⁹ / ₁₆ " (40 mm)
Minimum Recommended distance to ventilation hood	24" (610 mm)
Electrical	
Electrical Requirements	208V, 60Hz, 50 Amps, 10,000W 240V, 60Hz, 50 Amps, 11,500W
Power Cable	3' 11 ¹ / ₄ " (1.2 m)
Shipping	
Shipping Weight	65.35 lbs
Shipping Dimensions	40 ⁵ / ₁₆ " W x 7 ⁹ / ₃₂ " H x 26 ²¹ / ₃₂ " D
Support	
Call	800.843.7231
Miele Website	~@www.mieleusa.com
20/20 Link	~@2020technologies.com

36" Flush-Mounted Induction Cooktop KM 6375



PRODUCT VIEWS

Top View

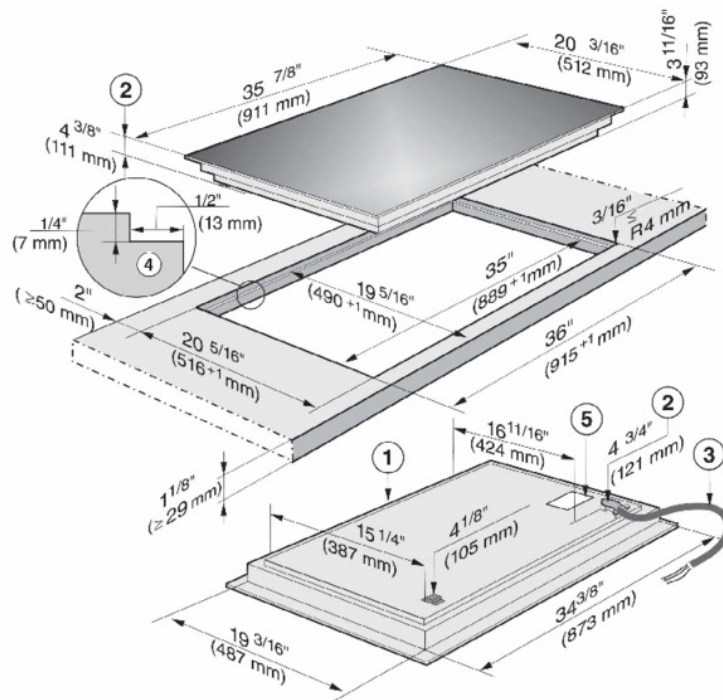


- ① Cooking zone with Booster
- ② PowerFlex cooking zone with TwinBooster
- ③ PowerFlex cooking zone with TwinBooster
- ②③ can be combined to form PowerFlex cooking zone
- ④ Cooking zone with Booster
- ⑤ Cooking zone with TwinBooster
- ⑥ DirectSelection Plus controls

36" Flush-Mounted Induction Cooktop KM 6375



INSTALLATION DIMENSIONS



- ① Front
- ② Installation height
- ③ Flexible metal hose with power cord,
L = 3' 11 1/4" (1200 mm)
- ④ Data plate

Cut-out dimensions for granite or marble counters. Please take careful note of the diagram.

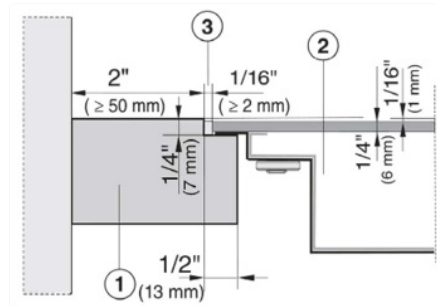
This unit must only be flush mounted! Proud mounting of unit may damage the unit and will void warranty.

36" Flush-Mounted Induction Cooktop KM 6375



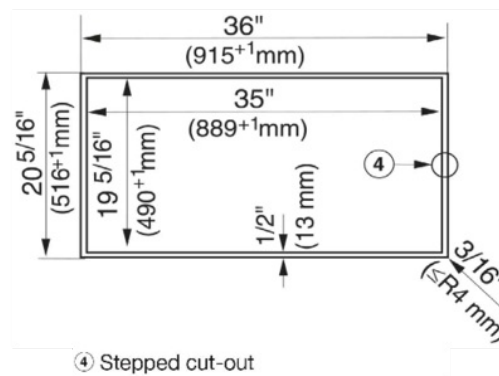
INSTALLATION SAFETY CLEARANCE

Front Side View Of Flush Mount
Installation With Granite, Marble,
Or Solid Surface Countertops



- ① Countertop
- ② Cooktop
- ③ Gap

As the ceramic glass slab and the counter cut-out have a certain dimensional tolerance, the width of the gap ③ (min. 1/16" [2 mm]) can vary.



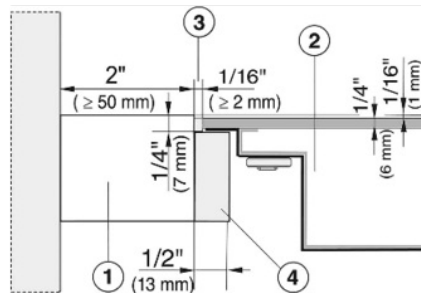
- ④ Stepped cut-out

36" Flush-Mounted Induction Cooktop KM 6375



INSTALLATION SAFETY CLEARANCE

Front Side View Of Flush Mount
Installation for Solid Wood, Tiled, Or
Glass Countertops



- ① Countertop
- ② Cooktop
- ③ Gap
- ④ Wooden frame 1/2" (13 mm) (not supplied with appliance)

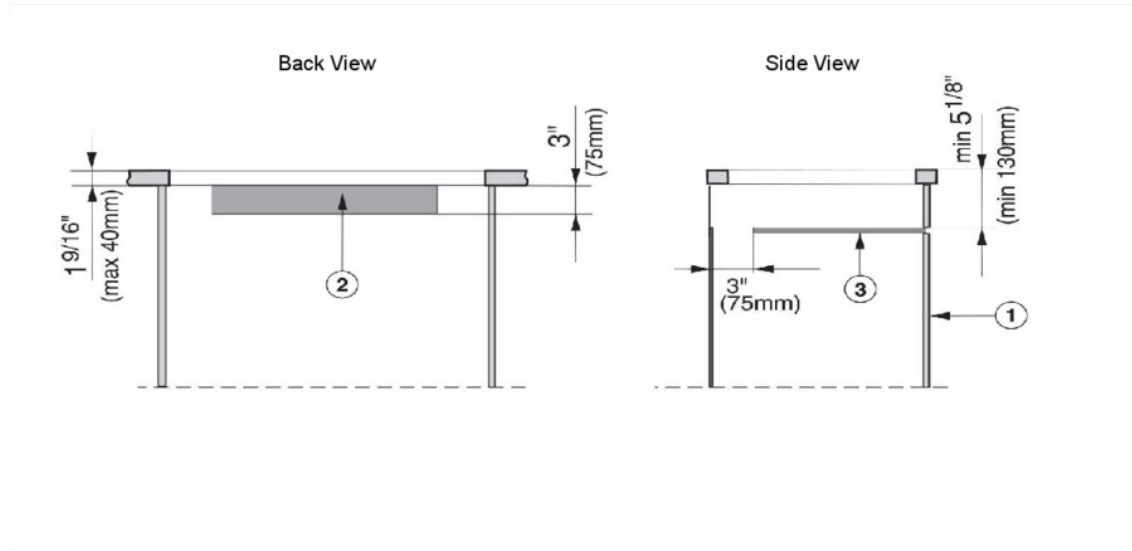
As the ceramic glass slab and the counter cut-out have a certain dimensional tolerance, the width of the gap ③ (min. 1/16" [2 mm]) can vary.

36" Flush-Mounted Induction Cooktop KM 6375



INSTALLATION

Ventilations



- ① Front of cooktop
- ② Cut-out in cabinet for ventilation.
Shown as an example in the rear wall of the cabinet.
- ③ Protective base
Installation of a protective base under the cooktop is allowed but not required.
If a protective base is fitted, there must be a clearance of at least 5 1/8" (130 mm) between the top of the protective base and the top of the countertop, for proper ventilation of the cooktop.
At the back there has to be a gap of 3" (75 mm) for the power cord.

Cooktop	Measurements cut-out
KM 6370 / KM 6375	90 sq-in. Example: 30" x 3" (762 x 75mm)

36" Flush-Mounted Induction Cooktop KM 6375



KM 6375 INDUCTION COOKTOP INSTALLATION IN COMBINATION WITH UNDERCOUNTER 30" MIELE OVEN H6x80BP

Countertop Thickness vs. Toekick Height

Taken into consideration:

- 35" tall cabinetry
- $\frac{3}{4}$ " (exact) platform thickness under oven/above toekick

		Toekick Height									
		$3\frac{1}{2}$	$3\frac{3}{4}$	4	$4\frac{1}{4}$	$4\frac{1}{2}$	$4\frac{3}{4}$	5	$5\frac{1}{4}$	$5\frac{3}{4}$	6
Countertop Thickness	$1\frac{1}{8}$	OK	OK	NA	NA	NA	NA	NA	NA	NA	NA
	$1\frac{1}{4}$	OK	OK	NA	NA	NA	NA	NA	NA	NA	NA
	$1\frac{3}{8}$	OK	OK	OK	NA	NA	NA	NA	NA	NA	NA
	$1\frac{1}{2}$	OK	OK	OK	NA	NA	NA	NA	NA	NA	NA
	$1\frac{9}{16}$	OK	OK	OK	NA	NA	NA	NA	NA	NA	NA

ESSENTIALS

MONSOON I

ONE-PIECE LINER

Monsoon I has taken the one-piece liner to the next level. Including dual-level halogen lights and an ADA-compliant RF remote you can easily control Monsoon I without ever reaching over a dangerous cooking surface. Equipped

with 6-speed electronic controls, pro baffle filters, our exclusive ACT™ technology and either a powerful 600 CFM blower (30" and 36" models) or 1,200 CFM blower (42" and 48" models).

ZEPHYR
ZEPHYRONLINE.COM

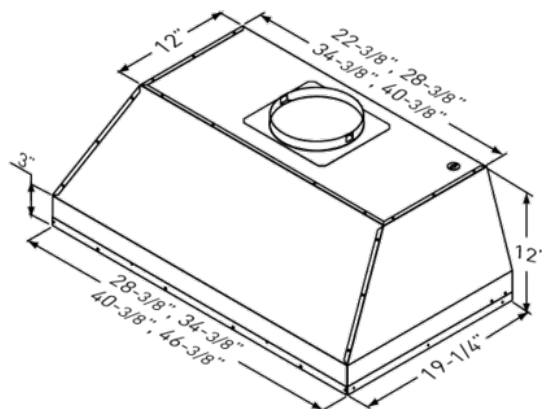
ACT™

	INTERNAL BLOWER STANDARD	INTERNAL BLOWER with ACT™ AIRFLOW CONTROL TECHNOLOGY™**		
30"/36" Min. - Max. CFM	200 - 600	NA	200 - 390	200 - 290
30"/36" Min. - Max. Sones	1 - 6	NA	1 - 4	1 - 3
42"/48" Min. - Max. CFM	450 - 1,200	350 - 590	350 - 390	NA
42"/48" Min. - Max. Sones	3.5 - 9	3.3 - 6	3.3 - 4	NA

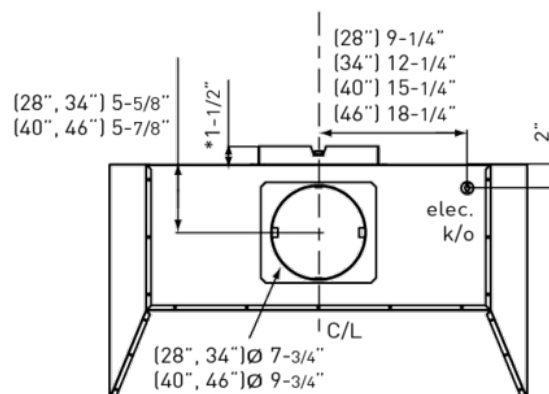
*AIRFLOW CONTROL TECHNOLOGY™ (ACT™) is an exclusive feature built into specific Zephyr hoods which can limit the maximum blower CFM to meet local code requirements.



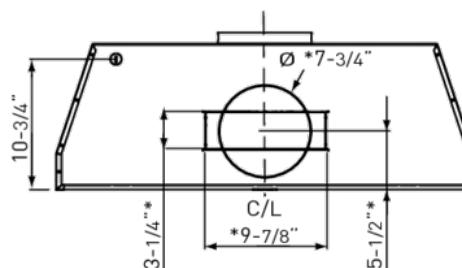
Includes Wireless Remote Control



FRONT



TOP



BACK

*Horizontal ducting only available in 30" and 36" models

ESSENTIALS

MONSOON I

ONE-PIECE LINER

ZEPHYR

ZEPHYRONLINE.COM

MODEL Stainless Steel	AK9228AS	AK9234AS	AK9240AS	AK9246AS
Size	30" (28-3/8" x 19-1/4")	36" (34-3/8" x 19-1/4")	42" (40-3/8" x 19-1/4")	48" (46-3/8" x 19-1/4")
Blower CFM (Min. - Max.)	200 - 600	200 - 600	450 - 1,200	450 - 1,200
Sones (Min. - Max.)	1 - 6	1 - 6	3.5 - 9	3.5 - 9
ACT 590 CFM (Min. - Max.)	NA	NA	350 - 590	350 - 590
ACT 590 Sones (Min. - Max.)	NA	NA	3.3 - 6	3.3 - 6
ACT 390 CFM (Min. - Max.)	200 - 390	200 - 390	350 - 390	350 - 390
ACT 390 Sones (Min. - Max.)	1 - 4	1 - 4	3.3 - 4	3.3 - 4
ACT 290 CFM (Min. - Max.)	200 - 290	200 - 290	NA	NA
ACT 290 Sones (Min. - Max.)	1 - 3	1 - 3	NA	NA
FEATURES				
ACT™ Technology	Yes	Yes	Yes	Yes
Controls	Electronic Touch	Electronic Touch	Electronic Touch	Electronic Touch
Speed Levels	6*	6*	6*	6*
Auto Delay-Off	Yes	Yes	Yes	Yes
Clean Air Mode	Yes	Yes	Yes	Yes
Lighting	Halogen, 35W x2	Halogen, 35W x2	Halogen, 35W x2	Halogen, 35W x4
Dual-Level Lighting	Yes	Yes	Yes	Yes
Filters	Pro Baffle x2	Pro Baffle x3	Pro Baffle x3	Pro Baffle x4
Removable Grease Tray	Yes	Yes	Yes	Yes
Wireless Remote Control	Yes	Yes	Yes	Yes
Recirculating Option	No	No	No	No
ADA Compliant	Yes	Yes	Yes	Yes
DUCT SPECIFICATIONS				
Vertical Internal Blower	8" Round	8" Round	10" Round	10" Round
Horizontal Internal Blower	3-1/4" x 10" or 8" Round	3-1/4" x 10" or 8" Round	NA	NA
AC POWER	120V, 60Hz at Max. 5A	120V, 60Hz at Max. 5A	120V, 60Hz at Max. 7A	120V, 60Hz at Max. 7A
OPTIONAL ACCESSORIES				
Bloom™ GU10 LED	Z0B0040	Z0B0040	Z0B0040	Z0B0040
Make-Up Air Kit	MUA006A	MUA006A	MUA010A	MUA010A
MOUNTING HEIGHT RANGE**	26" - 36"	26" - 36"	26" - 36"	26" - 36"
WARRANTY	3 years parts, 1 year labor	3 years parts, 1 year labor	3 years parts, 1 year labor	3 years parts, 1 year labor

*When ACT™ is enabled the maximum speed levels will change.

30" and 36" models: ACT 390 CFM = 3 speeds and ACT 290 CFM = 2 speeds.

42" and 48" models: ACT 590 CFM = 3 speeds and ACT 390 CFM = 2 speeds.

**Mounting height refers to distance between top of a 36" tall cooking surface and bottom of hood.

ACT™ AIRFLOW CONTROL TECHNOLOGY™ (ACT™) is an exclusive feature built into specific Zephyr hoods which can limit the maximum blower CFM to meet local code requirements.

Specifications subject to change, check zephyronline.com for up-to-date information.
Zephyr Ventilation | 2277 Harbor Bay Parkway, Alameda, CA 94502 | 888.880.VENT

SEP17.0201





DD24DCHTX9_N

Double DishDrawer™, 14 Place Settings, Water Softener (Tall)

Contemporary

This Fisher & Paykel Double DishDrawer™ Dishwasher allows you to wash independently with a taller top drawer to fit your larger items.

EZKleen Stainless Steel

Dimensions

Depth	22 9/16"
Height	34 - 36 3/8"
Width	23 9/16"

Features & Benefits

Ease of use

DishDrawer™ Dishwashers are as easy to open and close as kitchen drawers and can be conveniently positioned at bench height for ease of loading and minimal bending. Flexible racking allows you to make adjustments to fit in a variety of dishes.

Independent wash

With the ability to use both drawers independently and select different wash programs the DishDrawer™ Dishwasher can wash everything from fine glass and crystal to heavily soiled pots and pans.

Quick, Sanitize and Extra Dry options

The Quick wash modifier delivers a faster wash while maintaining performance. The Sanitize option provides extra protection killing 99.9% of bacteria in the final rinse. The Extra Dry setting is perfect for plastic dishes.

Quiet performer

Running at a very low decibel rating, these DishDrawer™ Dishwashers do their job without making a fuss. The combination of intelligent technology and simple mechanics means greater reliability and excellent wash performance.

Specifications

Accessories

Cutlery basket	2
Kick strip	•
Knife clip & Multipurpose clip	•

Capacity and loading

Accommodates plates up to	12.25" (top) 11" (bottom)
Adjustable height, foldable cupracks	•
Fold down tines	•
Pitch adjustable tines	•
Place settings	14

Control

Child lock	•
Electronic fault/Diagnostic indicator	•
End of cycle beeps	•
Energy saving delay start option up to 12 hrs	•
Rinse aid indicator light	•

Features

Built-in water softener	•
Fan assisted drying	•
Flow through detergent dispenser	•
Quiet operation	•
SmartDrive™ technology	•



A PEACE OF MIND SALE

24 Hours 7 Days a Week Customer Support
T 1.888.936.7872 W fisherpaykel.com

FISHER & PAYKEL

Fisher & Paykel Drawer Type DD24DCHTX9_N (continued)

SPEC SHEET › DD24DCHTX9_N › Double DishDrawer™, 14 Place Settings, Water Softener (Tall)

Date: 11.12.2018 › 2

Measurements	
Depth of toekick recess (to back of front panel)	1 1/2" - 4"
Dimensions (excl handle)	H34" - 36 3/8" x W23 9/16" x D22 9/16"
Height of toekick panel (adjustable)	2 13/16" - 5"
Performance	
Energy usage	282 kWh/year
Noise (dBa) on delicate cycle top drawer	44
Water usage	3.81 gal/cycle
Power requirements	
AMP draw	9.6 A
Rated current	15 A
Supply frequency	60 Hz
Supply voltage	120 V
Wire	3
Style And Series	
Product Style	Contemporary
Warranty	
Warranty	Limited 2 Year Parts & Labor

Wash programs	
Delicate	•
Extra Dry	•
Fast	•
Heavy	•
Medium	•
Normal eco	•
Quick	•
Rinse	•
Sanitize	•
Wash modifiers	3
Wash programs	15
SKU	81600
The product dimensions and specifications in this page apply to the specific product and model. Under our policy of continuous improvement, these dimensions and specifications may change at any time. You should therefore check with Fisher & Paykel's Customer Care Centre to ensure this page correctly describes the model currently available. © Fisher & Paykel Appliances Ltd 2018	
Other product downloads available at fisherpaykel.com	
fisherpaykel.com	

FISHER & PAYKEL



24" Induction Cooktop KM 6320



Features:

- 3 cooking zones
 - (1) vario zone of 7-11"
 - (2) vario zones of 6-9"
- (1) PowerFlex zone — PowerFlex technology combines two zones into a unique large zone (9x15"), up to 7,7kW
- TwinBooster function
- Con@ctivity 2.0 — communication between cooktop and hood
- Direct Selection controls, default power level 1-9, extended 1-12
- Stop&Go function
- Auto heat-up
- Pan size recognition
- Timer
- Overheating protection
- Child safety lock and safety switch-off

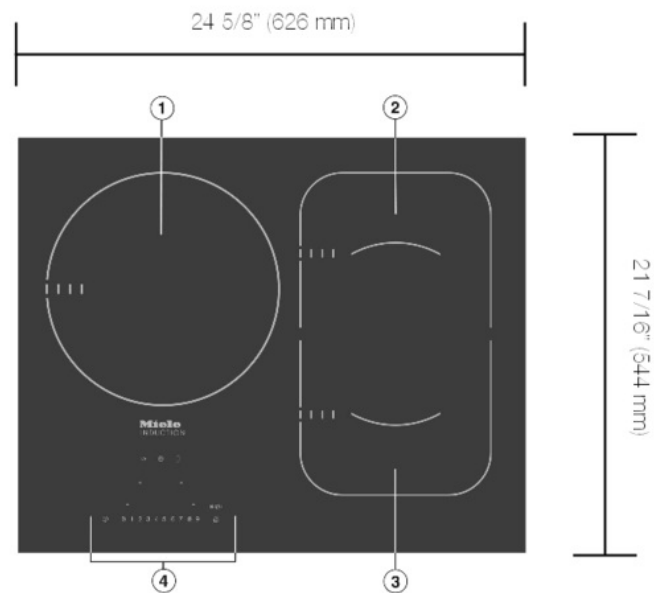
SPECIFICATIONS	
KM 6320 Induction Cooktop	Item 26632052USA
Product Dimensions	24 ^{3/8} " (626 mm) W x 4 ^{3/4} " (121 mm) H x 21 ^{7/16} " (544 mm) D
Cut-out Dimensions	22 ^{5/16} " (567 mm) W x 20 ^{3/8} " (518 mm) D
Minimum Back Spacing From Wall	2" (50 mm)
Minimum Countertop Thickness	1 ^{1/8} " (29 mm)
Maximum Countertop Thickness	1 ^{9/16} " (40 mm)
Minimum Recommended distance to ventilation hood	24" (610 mm)
Electrical	
Electrical Requirements	208V, 60Hz, 40 Amps, 6700W 240V, 60Hz, 40 Amps, 7700W
Power Cable	3' 11 ^{1/4} " (1.2 m)
Shipping	
Shipping Weight	44.6 lbs
Shipping Dimensions	28 ^{7/32} " W x 7 ^{9/32} " H x 26 ^{21/32} " D
Support	
Call Miele	800.843.7231
Miele Website	~@www.mieleusa.com
20/20 Link	~@2020technologies.com

24" Induction Cooktop KM 6320



PRODUCT VIEWS

Top View

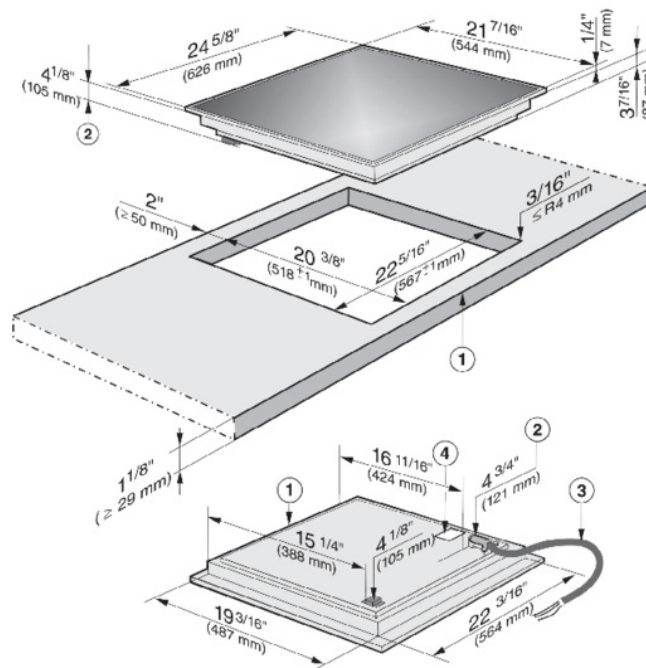


- ① Cooking zone with TwinBooster
- ② PowerFlex cooking zone with TwinBooster
- ③ PowerFlex cooking zone with TwinBooster
- ②③ can be combined to form PowerFlex cooking area
- ④ DirectSelection controls

24" Induction Cooktop KM 6320



INSTALLATION DIMENSIONS



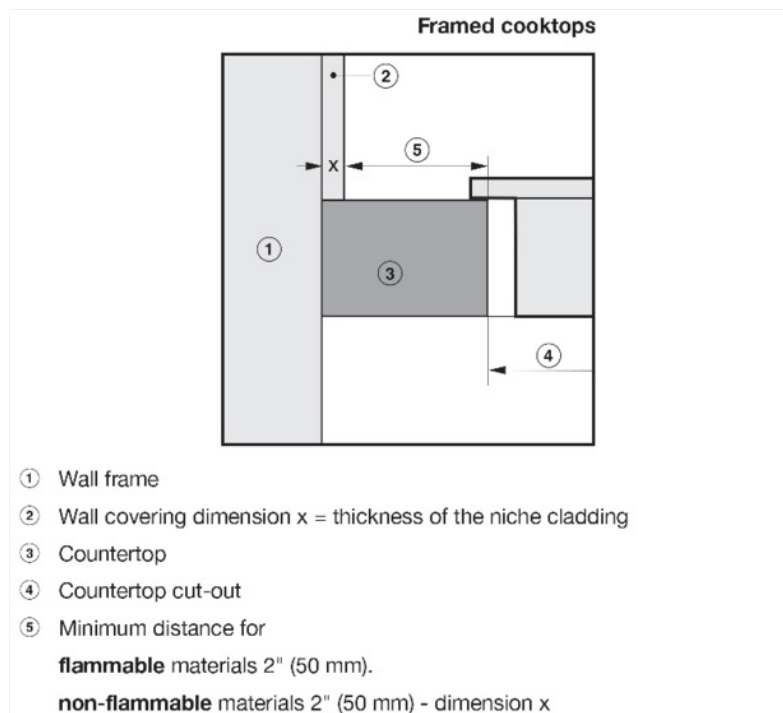
- ① Front
- ② Installation height
- ③ Flexible metal hose with power cord, L = 3' 11 1/4" (1200 mm)
- ④ Data plate

24" Induction Cooktop KM 6320



INSTALLATION SAFETY CLEARANCE

Front Side View
Proud Mount

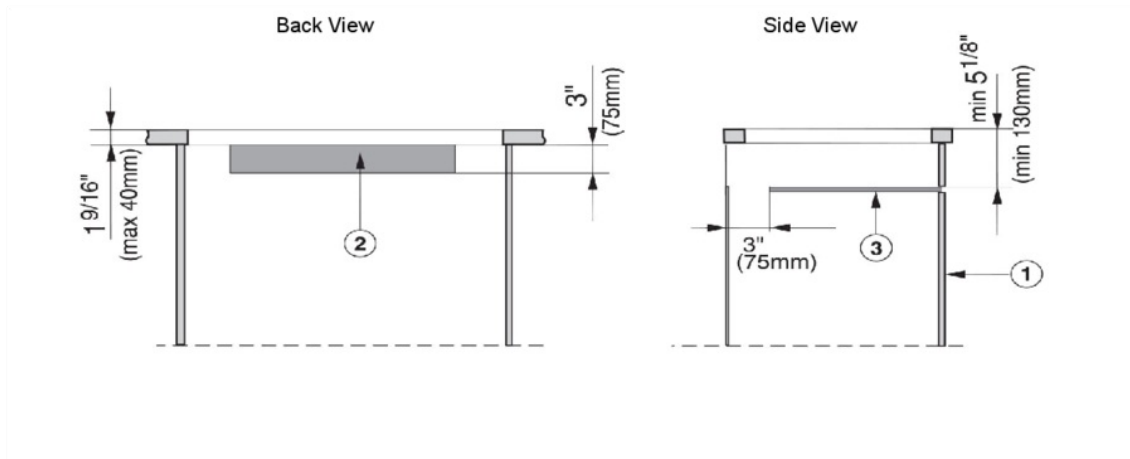


24" Induction Cooktop KM 6320



INSTALLATION

Ventilation



- ① Front of cooktop
- ② Cut-out (57sq-in.) in cabinet for ventilation.
Shown as an example in the rear wall of the cabinet. Measurements: 19" x 3"
(482 x 72 mm)
- ③ Protective base
Installation of a protective base under the cooktop is allowed but not required.
If a protective base is fitted, there must be a clearance of at least 5 1/8"
(130 mm) between the top of the protective base and the top of the countertop,
for proper ventilation of the cooktop.
At the back there has to be a gap of 3" (75 mm) for the power cord.

24" Induction Cooktop KM 6320



KM 6320 INDUCTION COOKTOP INSTALLATION IN COMBINATION WITH UNDERCOUNTER 30" MIELE OVEN H6x80BP

Countertop Thickness vs. Toekick Height

Taken into consideration:

- 34½" tall cabinetry
- ¼" of cooktop above countertop (proud)
- ¾" (exact) platform thickness under oven/above toekick

		Toekick Height									
		3½	3¾	4	4¼	4½	4¾	5	5¼	5¾	6
Countertop Thickness	1⅛	OK	OK	NA	NA	NA	NA	NA	NA	NA	NA
	1¼	OK	OK	OK	NA	NA	NA	NA	NA	NA	NA
	1⅜	OK	OK	OK	NA	NA	NA	NA	NA	NA	NA
	1½	OK	OK	OK	OK	NA	NA	NA	NA	NA	NA
	1⅝	OK	OK	OK	OK	NA	NA	NA	NA	NA	NA

 = Typical Installation





CS 1012-1 Double Gas Burner



CS 1012-1

Features:

- 2 completely sealed burners:
(1) 6,800 BTU normal burner (front)
(1) 10,230 BTU high-speed burner (rear)
- Available in natural or LP gas configurations
- Electric spark ignition
- Grate design allows easy movement of pots and pans
- Cast iron grate
- Enamelled burner components and pot rests
- Rapid ignition
- Automatic reignition
- Gas tap shut-off after unsuccessful reignition attempts
- Integrates beautifully with other CombiSet™ models

SPECIFICATIONS

CS 1012-1 — Item Gas: 27101253G
Item LP: 27101252LP

Overall Unit Width	11 ⁵ / ₁₆ " (288mm)
Overall Height	2 ¹ / ₄ " (57mm)
Overall Depth	20 ¹ / ₂ " (520mm)

Cut-Out

Minimum Cut-Out Width	10 ¹¹ / ₁₆ " (272mm)
Minimum Cut-Out Depth	19 ¹¹ / ₁₆ " (500mm)
Minimum Base Support	17 lbs

Additional Cut-outs Required No

Electrical

Electrical Requirements	120V 15A 60Hz
Power Cord	Yes - Molded NEMA 5-15 plug 120V power cord (5' - 1.5m) length
Electrical Rating	25W (120V) only during Ignition
BTU Rating of Front Burner	6,300 BTU
BTU Rating of Rear Burner	10,200 BTU
Fuel Source	Natural Gas or LP (Model Specific)
Maximum Gas Pressure Prior to Regulator	1/2" PSI (3.5kPa)

Shipping

Shipping Weight	21 lbs
Shipping Dimensions	24" (610 mm)L x 16" (406 mm) W x 8" (203 mm) H

Notes For CombiSets

Not intended for use with Miele DA 6480 and DA 6490 Downdraft hoods.

Support

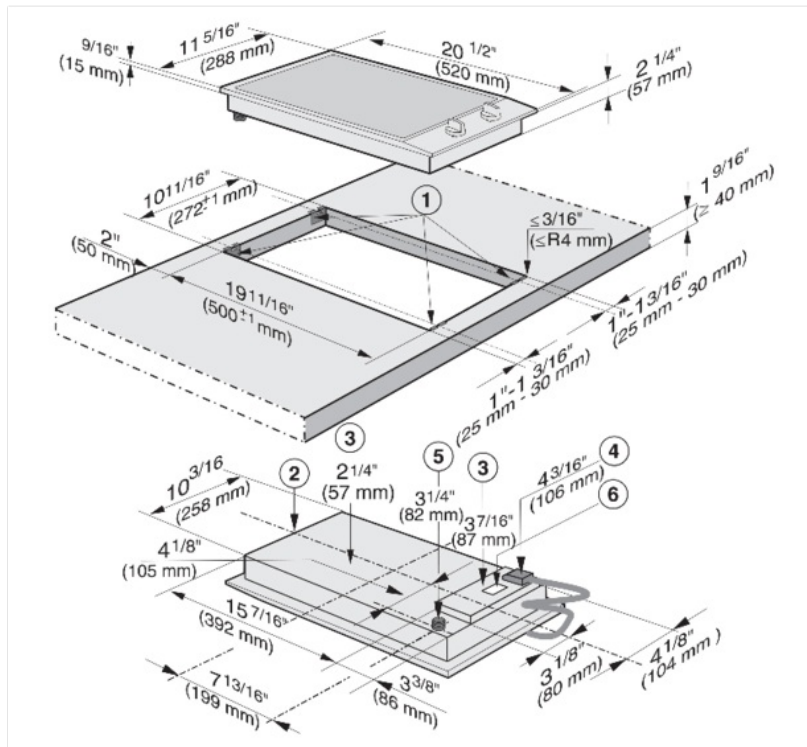
Call Miele	800.843.7231
Miele Website	www.mieleusa.com
20/20 Link	2020technologies.com



CS 1012-1 Double Gas Burner

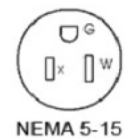
INSTALLATION SPECIFICATIONS

Product and
Cut-Out Dimensions



Location Codes

- 1 – Spring clips
- 2 – Appliance front
- 3 – Installation height
- 4 – Power supply box with connection cable with plug, Length = 47 1/4" (1200 mm)
120 V, 60 Hz, 15 A fuse rating. Actual power consumption (during ignition only) is 25 W.
Ensure that the power outlet is accessible after installation
- 5 – 1/2" NPT Gas fitting. The combiset should be ordered for either natural gas or LP gas. For your convenience an AGA or CGA approved flexible stainless steel gas hose (accordion type) may be used between the gas connection and the Miele regulator.
- 6 – Rating label – Ensure that the electrical supply matches the rating. Adhere rating label sticker supplied with the appliance into the manual.



NEMA 5-15

CS 1012-1
Page 3 of 6

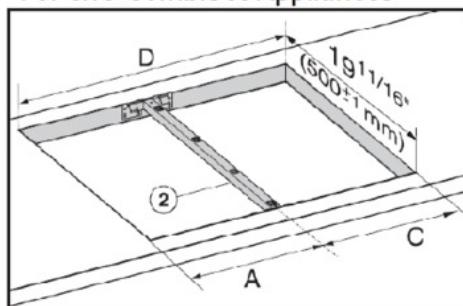
Specification Sheets TRS 03082016



CS 1012-1 Double Gas Burner

INSTALLATION SPECIFICATIONS

Cut-out Dimensions For two CombiSet Appliances

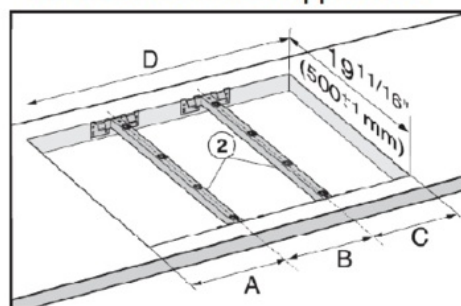


For the installation of **two appliances** the width of the countertop cut-out D is the sum of A and C.

A, B and C = appliance width
11 5/16" or 15"
(288 mm or 380 mm)
minus 5/16" (8 mm) to allow for the overhang

D = width of the countertop cut-out

Cut-out Dimensions For three CombiSet Appliances



For the installation of **three appliances** the width of the countertop cut-out D is the sum of A and B and C.

If **more than three appliances** are being installed, you will need to add, A, B or C for each additional appliance.

Sample calculations for a countertop cut-out for three appliances

A appliance width minus 5/16" (8mm)	B appliance width	C appliance width minus 5/16" (8mm)	D countertop cut-out
11" (280 mm)	11 5/16" (288 mm)	11" (280 mm)	33 3/8" (848 mm)
11" (280 mm)	15" (380 mm)	14 5/8" (372 mm)	40 5/8" (1032 mm)
14 5/8" (372 mm)	11 5/16" (288 mm)	11" (280 mm)	37" (940 mm)
14 5/8" (372 mm)	15" (380 mm)	14 5/8" (372 mm)	44 1/4" (1124 mm)

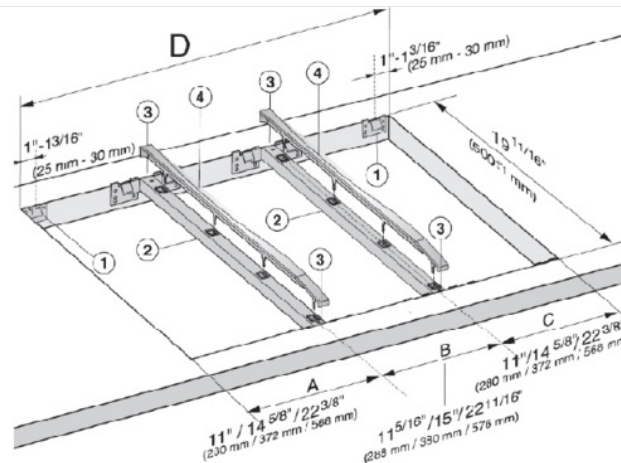
Location codes

2 – Support bars (Accessory, Item - 27996029D CSZL 1500 (Includes cover))



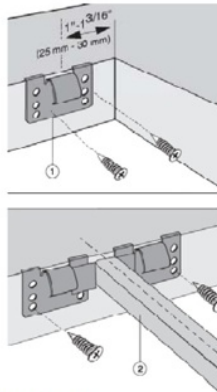
CS 1012-1 Double Gas Burner

INSTALLATION SPECIFICATIONS

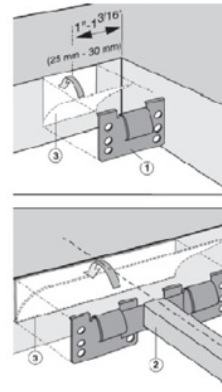


The illustration above represents the attachment of spring clips 1 and support bars 2 for 3 appliances

An additional support bar is required for each additional appliance. The position for the attachment of an additional support bar depends on the width of appliance B.



Spring Clip installation on wood or solid surface countertop
Place the supplied spring clips 1 and the support bars 2 at the marked positions as shown above, by laying them on the upper edge of the cut-out and then securing them with the 1/8" x 1" (3.5 x 25 mm) screws (supplied)



Spring Clip installation on a granite countertop
Position and attach the spring clips 1 and the support bars 2 with strong double-sided tape 3. Coat the side and lower edges of the spring clips with silicone. Fill the space between the support bars and the countertop with silicon

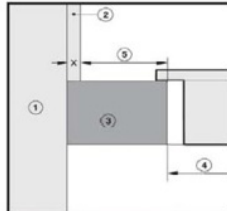
Location Codes

- 1 – Spring Clips
- 2 – Support bars (Accessory, Item - 27996029D CSZL 1500 (Includes cover 4))
- 3 – Space between support bar and countertop
- 4 – Cover



CS 1012-1 Double Gas Burner

Safety distances to back wall



- 1 – Wall frame
- 2 – Wall covering
- x = thickness of the wall covering
- 3 – Countertop
- 4 – Countertop cut-out
- 5 – Minimum safety distance
- with flammable materials 2" (50 mm)
- with non-flammable materials 2" (50 mm) minus x

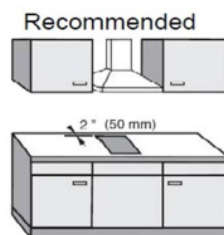
If a wall covering is installed, a minimum safety distance must be maintained between the countertop cut-out and the covering, since high temperatures can damage these materials.

If the covering is made of a combustible material (such as wood), the distance between the countertop cut-out and the wall covering must be a minimum of 2" (50 mm).

For coverings made of non-combustible materials (such as metal, marble, granite or ceramic tiles) the minimum safety distance between the countertop cut-out and the wall covering must be 2" (50 mm) minus the thickness of the covering.

For example: thickness of wall covering 9/16" (15 mm) 2" (50 mm) - 9/16" (15 mm) = minimum safety distance 1 3/8" (35 mm).

Safety distances to surrounding cabinetry



The appliance should only be installed as shown in the above illustrations while maintaining the required safety distances shown. Do not install the appliance between two tall cabinets, this is a fire hazard.

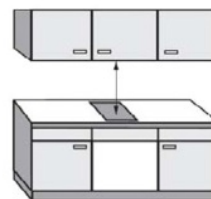
A distance of at least 2" (50 mm) must be kept between the countertop and the rear wall because of high temperature radiated.

The minimum distance required from the countertop cut-out to a side wall or tall cabinet right or left 10" (250 mm) (Location code 1)

Safety distance above the appliance

The minimum safety distance given by the hood manufacturer must be maintained between the combiset and the hood above it. See the installation instructions for the hood for these safety measurements.

If the hood manufacturers instructions are not available or if flammable objects are installed over the combiset (e.g. cabinets, utensil rail, etc.), a minimum safety distance of 30" (760 mm) must be maintained.



Indoor use

The combiset must not be installed over a dishwasher, wine storage, refrigerator or freezer. Heat radiated by the combiset may damage the appliances.

Deep fat fryers must not be installed directly next to a gas combiset. A minimum distance of 11 5/16" is required.

The appliance must not be permanently sealed into the countertop when installed. The sealing strip under the edge of the appliance provides a sufficient seal for the countertop.

All installations must be done in accordance with local codes.



FRONT LOAD WASHER

4.3 Cu. Ft.

EFLW427UIW

With LuxCare® Wash and IQ-Touch™ Controls



PRODUCT DIMENSIONS

Height	38"
Width	27"
Depth	32"

MORE EASY-TO-USE FEATURES

10-YEAR MOTOR WARRANTY PLUS LIFETIME TUB WARRANTY

Rest easy knowing your washer is backed by a 10-year motor and lifetime tub warranty.

FITS MORE ROOMS WITH REVERSIBLE WASHER DOOR

With reversible washer door, four-way venting, and a standard 27" platform, our products are designed to fit just about anywhere you want to put them.

SPACIOUS CAPACITY

Easily cleans a king-sized comforter with spacious 4.3 cu.ft. drum.

7 CYCLES TO CARE FOR EVERY FABRIC

Clean all your special items with tailored cycles for delicates, heavy duty, whitest whites, and more.

BRILLIANT LED DISPLAY SHINES IN EVEN THE DARKEST LAUNDRY ROOMS

Our beautifully bright display illuminates information on cycles and lets you know how much time is left.

PLATINUM STAR® LIMITED WARRANTY

Our exclusive Platinum Star® Limited Warranty includes a three-year coverage on parts and one year on labor.²

DELAY START

Adjust washer start time to meet your lifestyle needs.

AUTOMATIC WATER-LEVEL ADJUSTMENT

Washer automatically modifies water levels to amount of clothes in unit.

CONTROL LOCK

Insures washer remains closed while cycle is running.

MORE INSTALLATION OPTIONS

Raise your units with optional pedestal drawers that provide extra storage. Or use the optional stacking kit for convenient placement in a closet or small space.

Available in:



Island White
(IW)

¹Fast time based on 3 lb. DOE load.
²Eligibility based on product registration with Electrolux North America within 60 days of purchase.
Products must have been purchased on or after July 1, 2013. See limited warranty for details.

ELECTROLUXAPPLIANCES.COM

SIGNATURE FEATURES



THOROUGH CLEANING WITH LUXCARE® WASH SYSTEM

Our LuxCare® Wash System offers a thorough clean with improved wash actions, temperature control, and smart load sensing.



20-MINUTE FAST WASH¹

Quickly deep cleans the items you need most.



STAIN TREAT™ OPTION GENTLY AND EFFECTIVELY REMOVES STAINS

Optimizes the temperature, tumbling actions, and cycle time for optimal stain-removing conditions.



ENERGY STAR®-CERTIFIED

Electrolux washers meet strict criteria to guarantee high-quality energy efficient performance — without sacrificing clean.

FRONT LOAD WASHER

EFLW427UIW



27" FRONT LOAD WASHER

Capacity D.O.E. 4.3 Cu. Ft.

FEATURES

Pull-to-Open Door	Yes
IQ-Touch™ Controls	Yes
Balance System	Perfect Balance®
Sound System	Luxury-Quiet™
Pull-to-Open Dispenser Drawer	Yes
Wash System	LuxCare®
Wash Drum	Stainless Steel
Automatic Temperature Control	Yes
Automatic Water Level Adjustment	Yes
Auto Prewash Detergent Dispenser (Liquid / Powder)	Yes
Auto Bleach Dispenser (Liquid Only)	Yes
Auto Detergent Dispenser (Liquid / Powder)	Yes
Auto Fabric Softener Dispenser (Liquid Only)	Yes
Tumble Speed (RPM)	Variable
Spin Speed (RPM)	1,300
Reversible Door	Yes
Adjustable Leveling Legs	Yes
ENERGY STAR®	Yes

CYCLES

Heavy Duty, Whitest Whites, Normal, 20-Min. Fast Wash, Delicates, Rinse & Spin, Clean Washer	7
--	---

OPTIONS

Wash / Rinse Temperature Combinations	5
Temperature Selections	4
Spin Speed Selections	4
Soil Level Selections	4
Delay Start	Yes
End-of-Cycle Chime	On/Off

INSTALLATION OPTIONS

Freestanding, Under Counter*, Stacked (Under Dryer), Pedestal, Hidden (in Closet), Second Floor	Yes
---	-----

ACCESSORIES

Luxury-Glide® Pedestal with Spacious Storage Drawer—Island White — PN # EPWD257UIW	Optional
Dryer Stacking Kit — PN # STACKIT7X	Optional
Drain Hose Extension Kit — PN # 137098000	Optional

SPECIFICATIONS

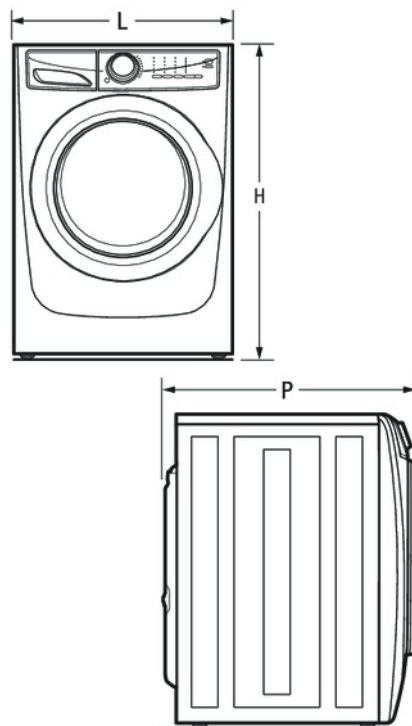
Color —	
Island White	W
Power Supply Location	Top Right Rear
Water Inlet Location	Top Left Rear
Voltage Rating	120V/60 Hz
Connected Load (kW Rating) @ 120 Volts†	1.2
Watts @ 120 Volts	1,200
Amps @ 120 Volts	12
Shipping Weight (Approx.)	247 Lbs.

*Side-by-Side units in under-counter installation require custom-built countertop and/or cabinetry.

†An electrical supply with grounded three-prong receptacle is required. The power supply circuit must be installed in accordance with current edition of National Electrical Code (NEC® 90) and local codes & ordinances.

NOTE: Always consult local and national electric and plumbing codes. Refer to Product Installation Guide for detailed installation instructions on the web at electroluxappliances.com.

Specifications subject to change.



PRODUCT DIMENSIONS

Height (without 15" Pedestal)	38"
(with 15" Pedestal)	53-1/4"
Width	27"
Depth (to Center of Arc Not Including Hose)	32"
(with Door 90° Open)	50-5/8"

Electrolux Major Appliances, N.A.

USA • 10200 David Taylor Drive • Charlotte, NC 28262 • 1-877-4electrolux (1-877-435-3287) • electroluxappliances.com
 CANADA • 5855 Terry Fox Way • Mississauga, ON L5V 3E4 • 1-800-265-8352 • electroluxappliances.ca

EFLW427U 05/18

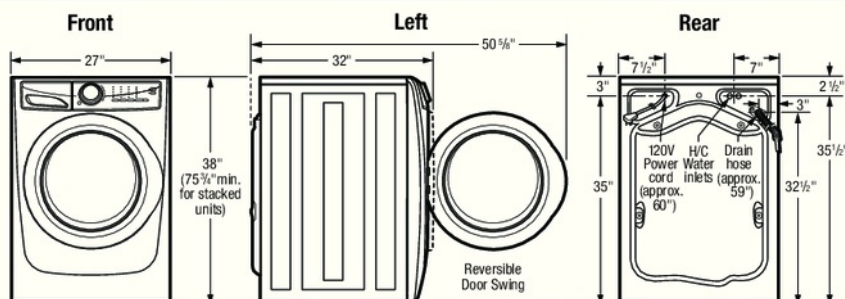
© 2018 Electrolux Home Products, Inc.



High standards of quality at Electrolux Home Products, Inc. mean we are constantly working to improve our products. We reserve the right to change specifications or discontinue models without notice.

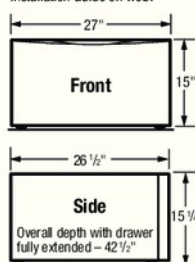
FRONT LOAD WASHER

EFLW427UIW

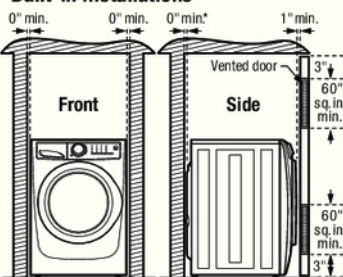


15" Pedestal Drawer Installation

Elevates washer height to 53 1/4". For detailed pedestal installation, refer to instructions included with pedestal or on web. Pedestal installation may require modified utility hookup locations. For details, refer to Product Installation Guide on web.



Built-In Installations



*Installation with steam dryer requires additional 3/4" hose clearance.

Closet Installation:

If washer and dryer are installed in same closet, door(s) MUST be vented with 120 sq. in. minimum louvered opening, equally divided, located 3" from top and bottom of door. Louvered door(s) with equivalent air openings for full-length of door is acceptable. Air openings MUST remain unobstructed with door(s) installed.

Installation Clearances:

Washer can be built in alone or with dryer (side by side or stacked) in closet, recess or under counter installation with 0" minimum clearance required around sides and back of unit(s). To achieve 0" minimum rear clearance when installed with dryer, dryer MUST be vented straight back or with quick-turn 90° elbow. Steam dryer requires additional 3/4" steam hose clearance at back of unit(s). Installation of closet door(s) requires additional 1" minimum clearance between front of unit(s) and door(s). Location of plumbing, exhaust and utility hookups MUST be considered when planning any built-in installation. For additional installation details, refer to Product Installation Guides on web.

Under Counter Installation:

Installation of washer alone or side by side with dryer under counter, requires custom-built countertop and/or cabinetry to accommodate unit(s) height.

Stacking Units:

Stacking dryer above washer requires use of optional Stacking Kit (PN# STACKIT7X) with modified utility hookup locations for dryer. For complete installation details, refer to instructions included with Stacking Kit or on web.

Front Load Washer Specifications

- Product Weight – 237 Lbs. / Shipping Weight – 247 Lbs.
- An electrical supply with grounded three-prong receptacle is required. The power supply circuit must be installed in accordance with current edition of National Electrical Code (ANSI/NFPA 70) and local codes & ordinances. (Do not use same circuit as dryer.)
- Voltage Rating – 120V / 60Hz
- Connected Load (kW Rating) @ 120 Volts = 1.2 kW
- Amps @ 120V = 12A
- Equipped with 120V 3-wire power supply cord, approx. 60" long.
- Always consult local and national electric & plumbing codes.
- To maximize detergent effectiveness, ambient temperature should never be below 60°F.
- Can be installed alone, with or without optional 15" pedestal drawer, or stacked beneath matching Electrolux Dryer, which requires installation of optional dryer stacking kit. (For installation details, refer to instructions included with optional pedestal or stacking kit or on web.)
- Can be built in alone or with matching Electrolux Dryer (side by side or stacked) in closet, recess or under counter installation with 0" minimum clearance required around sides and back of unit(s). To achieve 0" minimum rear clearance when installed with dryer, dryer MUST be vented straight back or with quick-turn 90° elbow. Steam dryer requires additional 3/4" steam hose clearance at back of unit(s). Installation of closet door(s) requires additional 1" minimum clearance between front of unit(s) and door(s). Location of plumbing, exhaust and utility hookups MUST be considered when planning any built-in installation.
- Under-counter installation requires custom-built countertop and/or cabinetry to accommodate unit(s) height.

- Do NOT install in area exposed to dripping water or outdoor weather conditions, or where gasoline or other flammables, including automobiles, are kept or stored.
- For garage installation, washer MUST be located minimum 18" above floor.
- Floor MUST be solid with 1" maximum slope. To ensure vibration or movement does not occur, reinforcement of floor may be necessary. Do NOT install on carpeted surface.
- Leveling legs supplied to level washer properly and reduce excessive noise and vibration.
- H/C water faucets MUST be installed within 42" of washer's water inlet and MUST be 3/4" garden hose type, to connect to 48-1/2" inlet hoses.
- Water pressure MUST be between 20 and 120 psi with NOT more than 10 psi pressure difference between hot and cold.
- Drain required with standpipe diameter of 1-1/4" min. and height of 24" min./ 96" max. above floor, capable of eliminating 17 gallons per minute. Attached 59" drain hose can reach 79"-high standpipe.

Note: For planning purposes only. Refer to Product Installation Guide on the web at electroluxappliances.com for detailed instructions.

Optional Accessories

- Pedestal Drawers – Island White (PN# EPWD257UIW).
- Dryer Stacking Kit – (PN# STACKIT7X).
- Drain Hose Extension Kit – (PN# 137098000).

Electrolux Major Appliances, N.A.

USA • 10200 David Taylor Drive • Charlotte, NC 28262 • 1-877-4electrolux (1-877-435-3287) • electroluxappliances.com
CANADA • 5855 Terry Fox Way • Mississauga, ON L5V 3E4 • 1-800-265-8352 • electroluxappliances.ca

EFLW427U 05/18

© 2018 Electrolux Home Products, Inc.



High standards of quality at Electrolux Home Products, Inc. mean we are constantly working to improve our products. We reserve the right to change specifications or discontinue models without notice.



ELECTRIC FRONT LOAD DRYER

8.0 Cu. Ft.

EFME427UIW

Perfect Steam™ Dryer with IQ-Touch™ Controls



PRODUCT DIMENSIONS

Height	38"
Width	27"
Depth	31-1/2"

MORE EASY-TO-USE FEATURES

EXTRA-LARGE CAPACITY DRYER

Dry more in each load with our 8.0 cu. ft. dryers.

PLATINUM STAR® LIMITED WARRANTY

Our exclusive limited warranty that includes three-year coverage on parts and one year on labor.²

7 CYCLES TO CARE FOR EVERY FABRIC

Perfectly dry every item with tailored cycles for towels, delicates, and more.

FITS MORE ROOMS WITH REVERSIBLE DOOR

Enjoy easy loading no matter how your washer and dryer are configured.

OPTIONAL PEDESTALS AND STACKING KIT FOR MORE INSTALLATION OPTIONS

Raise your units with optional pedestal drawers that provide extra storage. Or use the optional stacking kit for convenient placement in small spaces.

LUXURY-DESIGN® LIGHTING

Conveniently find any article of clothing with premium LED lighting that provides visibility inside your dryer.

BRILLIANT LED DISPLAY SHINES IN EVEN THE DARKEST LAUNDRY ROOMS

Our beautifully bright display illuminates information on cycles and lets you know how much time is left.

LUXURY-QUIET™ SOUND SYSTEM

So quiet you can run it whenever you want without disrupting your household.

CONTROL LOCK

To help avoid unwanted use.

Available in:



Island White
(IW)

*Fastest time based on smallest load/Fast Dry cycle selected for various load compositions.
*Eligibility based on product registration with Electrolux North America within 60 days of purchase. Products must have been purchased on or after July 1, 2012. See limited warranty for details. Limited time offer.

ELECTROLUXAPPLIANCES.COM

SIGNATURE FEATURES



KEEPS CLOTHES LOOKING THEIR BEST

Clothes are gently tumbled while moisture sensors detect when clothes are dry to prevent over-drying.



20-MINUTE FAST DRY*

Quickly dry the items you need most.



ENERGY STAR®-CERTIFIED

Rigorously tested to do more with less. Electrolux dryers meet strict criteria to guarantee high-quality energy efficient performance.



PERFECT STEAM™ WRINKLE RELEASE OPTION

Gently releases wrinkles and reduces static to keep clothes looking their best.

ELECTRIC FRONT LOAD DRYER

EFME427UIW



27" ELECTRIC FRONT LOAD DRYER

Capacity D.O.E.	8.0 Cu. Ft.
FEATURES	
Pull-to-Open Door	Yes
IQ-Touch™ Controls	Yes
Perfect Steam™ Dry System	Yes
Dry System	Luxury-Dry™
Sound System	Luxury-Quiet™
Lighting	Luxury-Design™ LED
Tumble System	Gentle Tumble™
Moisture Sensor	Yes
Dryer Drum	Painted Steel
Tumble Speed (RPM)	50
Reversible Door	Yes
Adjustable Leveling Legs	Yes
ENERGY STAR®	Yes

CYCLES

Timed Dry (30, 45, 60), Heavy Duty, Mixed Load, Towels, Normal, 20-Min. Fast Dry, Delicates	7
---	---

OPTIONS

Temperature Selections	4
Add Steam	Yes
Electronic Auto Dry System	Yes
Manual Timed Dry Selections	4
Delay Start (Hours)	12
End-of-Cycle Chime	On/Off
Dryness Levels	4

INSTALLATION OPTIONS

Freestanding, Under Counter*, Stacked (Above Washer), Pedestal, Hidden (in Closet), Second Floor	Yes
4-Way Dryer Venting	Yes

ACCESSORIES

Luxury-Glide® Pedestal with Spacious Storage Drawer—Island White – PN# EPWD257UIW	Optional
Dryer Stacking Kit – PN# STACKIT7X	Optional
Drying Rack – PN# A04840701	Optional
Assembly Hose Kit – PN# 5304495002	Optional

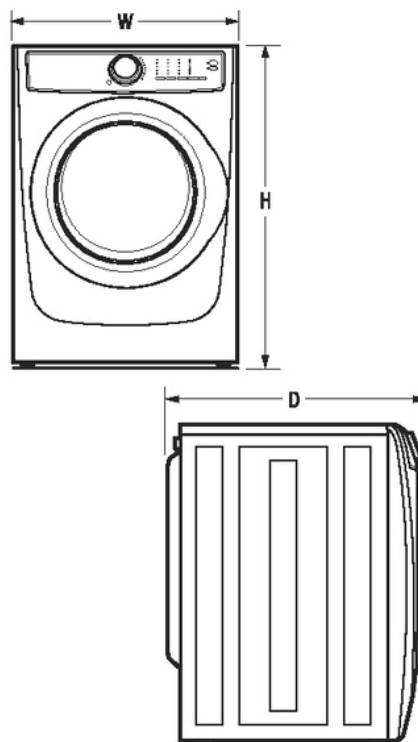
SPECIFICATIONS

Color –	
Island White	NW
Maximum Exhaust Duct Length** (Ft.)	125
Power Supply Connection Location	Rear
Voltage Rating	240V/60 Hz/30A
Connected Load (kW Rating) @ 240 Volts	6.0
Amps @ 240 Volts	25
Heating Element @ 240 Volts (Watts)	5,400
Shipping Weight (Approx.)	140 Lbs.

*Side-by-Side units in under-counter installation require custom-built countertop and/or cabinetry.

**Rigid metal duct preferred, semi-rigid optional and allow deductions for elbows and vents. Refer to Installation Guide on web for additional information.

NOTE: Always consult local and national electric and plumbing codes. Refer to Product Installation Guide for detailed installation instructions on the web at electroluxappliances.ca. Specifications subject to change.



PRODUCT DIMENSIONS

Height (without 15" Pedestal)	38"
(with 15" Pedestal)	53-1/4"
Width	27"
Depth (to Center of Arc Not Including Hose)	31-1/2"
(with Door 90° Open)	50-5/8"

Electrolux Major Appliances, N.A.

USA • 10200 David Taylor Drive • Charlotte, NC 28262 • 1-877-4electrolux (1-877-435-3287) • electroluxappliances.com
 CANADA • 5855 Terry Fox Way • Mississauga, ON L5V 3E4 • 1-800-265-8352 • electroluxappliances.ca

EFME427U 0518

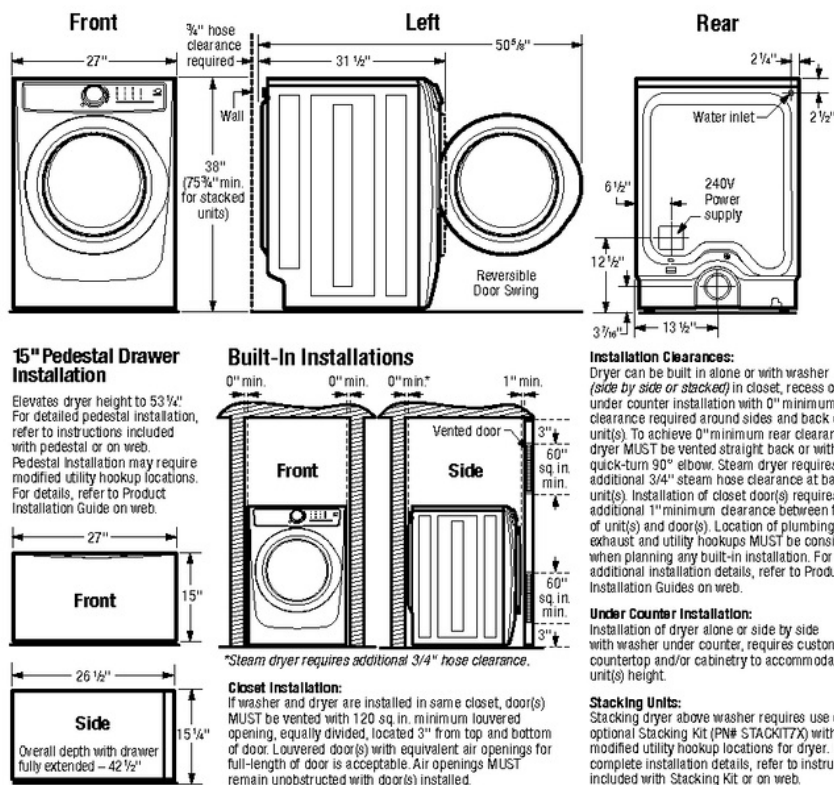
© 2018 Electrolux Home Products, Inc.



High standards of quality at Electrolux Home Products, Inc. mean we are constantly working to improve our products. We reserve the right to change specifications or discontinue models without notice.

ELECTRIC FRONT LOAD DRYER

EFME427UIW



Electric Dryer Specifications

- Product Weight - 130 Lbs. / Shipping Weight - 140 Lbs.
- Voltage Rating - 240/60Hz/30A
- Single phase 3- or 4-wire cable, 240 Volt, 60 Hertz AC only electrical supply with ground required on separate circuit fused on both sides of line. (Do not use same circuit as washer.)
- Connected Load (kW Rating) @ 240 Volts = 6.0 kW
- Amps @ 240V = 25A
- Dryer MUST employ a 3-conductor NEMA 10-30 type SRDT or 4-conductor NEMA 14-30 type SRDT or ST (as required), rated at 240 volt AC minimum, 30 amp power supply cord marked for use with clothes dryers (not supplied).
- Grounding through neutral link prohibited in specific applications and certain locales, requiring use of 4-wire system. (For detailed electrical requirements, refer to Product Installation Guide on web.)
- Always consult local and national electric & plumbing codes.
- Can be installed alone, with or without optional 15" pedestal drawer, or stacked above matching Electrolux Washer, which requires installation of optional dryer stacking kit. (For installation details, refer to instructions included with optional pedestal or stacking kit or on web.)
- Can be built in alone or with matching Electrolux Washer (side by side or stacked) in closet, recess or under counter installation with 0" minimum clearance required around sides and back of unit(s). To achieve 0" minimum rear clearance, dryer MUST be vented straight back or with quick-turn 90° elbow. Steam dryer requires additional 3/4" steam hose clearance at back of unit(s). Installation of closet door(s) requires additional 1" minimum clearance between front of unit(s) and door(s). Location of plumbing, exhaust and utility hookups MUST be considered when planning any built-in installation.
- Under-counter installation requires custom-built countertop and/or cabinetry to accommodate unit(s) height.

Electrolux Major Appliances, N.A.

USA • 10200 David Taylor Drive • Charlotte, NC 28262 • 1-877-4electrolux (1-877-435-3287) • electroluxappliances.com
 CANADA • 5855 Terry Fox Way • Mississauga, ON L5V 3E4 • 1-800-265-8352 • electroluxappliances.ca

EFME427U 0518

© 2018 Electrolux Home Products, Inc.

- Do NOT install in area exposed to dripping water or outdoor weather conditions, or where gasoline or other flammables, including automobiles, are kept or stored.
- For garage installation, dryer MUST be located minimum 18" above floor.
- Floor MUST be solid with 1" maximum slope. To ensure vibration or movement does not occur, reinforcement of floor may be necessary. Do NOT install on carpeted surface.
- Dryer MUST exhaust to outside of building, NOT into any concealed space.
- Dryer equipped for 4-way venting and approved for up to 125-foot-equivalent of duct length, determined by length of run and number of elbows needed.
- Exhaust installation requires minimum 4"-diameter rigid or semi-rigid metal duct with approved, unobstructed vent hood having swing-out damper(s). If installing rigid metal duct (preferred), do not exceed MAXIMUM venting run length of 125 ft., allow deductions for elbows and vents. If installing semi-rigid metal duct, do not exceed MAXIMUM venting run length of 8 ft., always allow deductions for elbows and vents (Refer to Product Installation Guide on web for additional information). Do NOT use flexible plastic or metal foil duct and use shortest run possible.
- Leveling legs supplied to level dryer properly and reduce excessive noise and vibration.
- Water inlet hose for steam setting connects to cold water supply with "Y" connector and requires 3/4" clearance between back of unit and wall.

Note: For planning purposes only. Refer to Product Installation Guide on the web at electroluxappliances.com for detailed instructions.

Optional Accessories

- Pedestal Drawers - Island White (PN# EPWD257UIW).
- Dryer Stacking Kit - (PN# STACKIT7X).
- Drying Rack - (PN# A04840701).
- Assembly Hose Kit - (PN# 5304495002).



High standards of quality at Electrolux Home Products, Inc. mean we are constantly working to improve our products. We reserve the right to change specifications or discontinue models without notice.