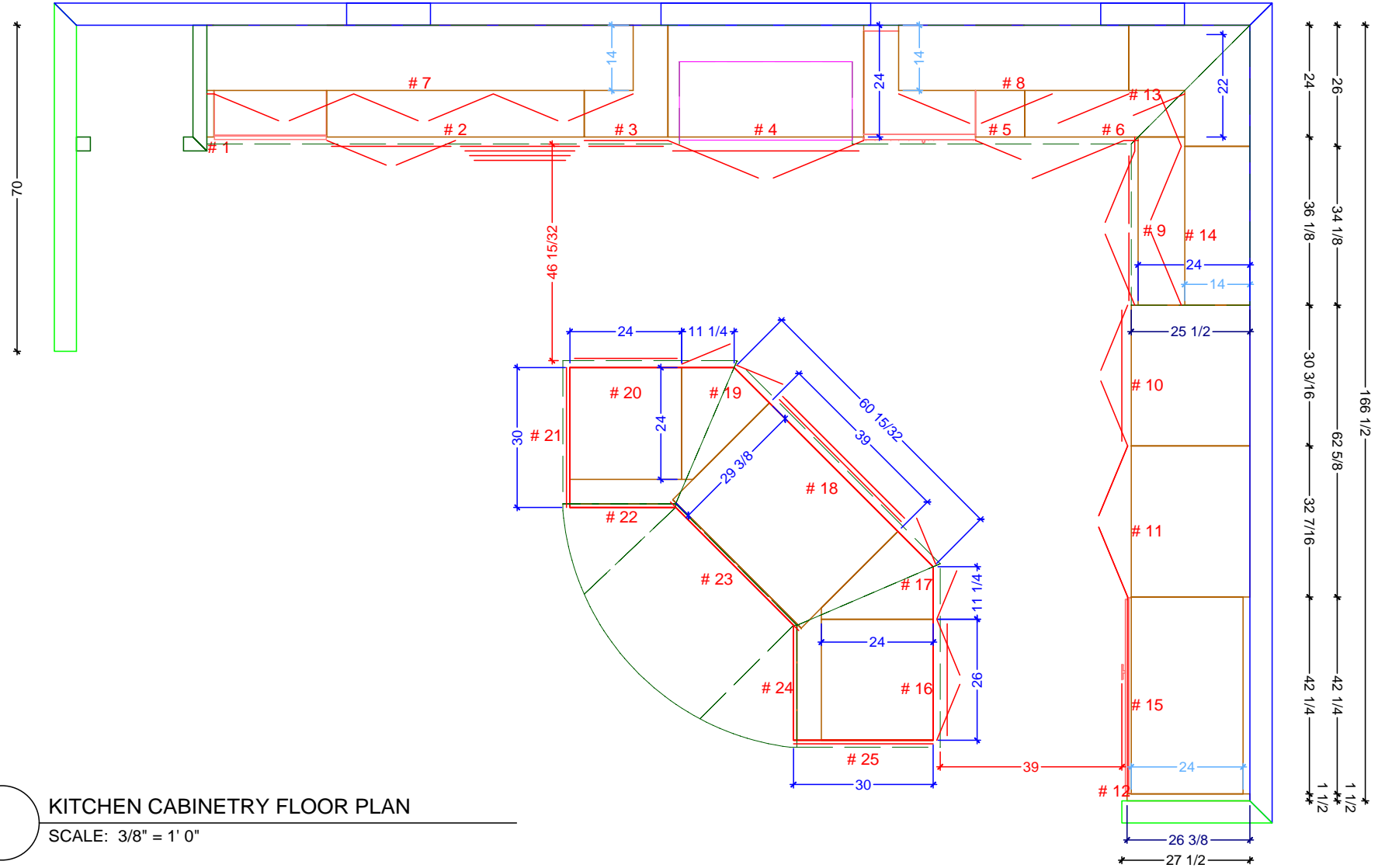


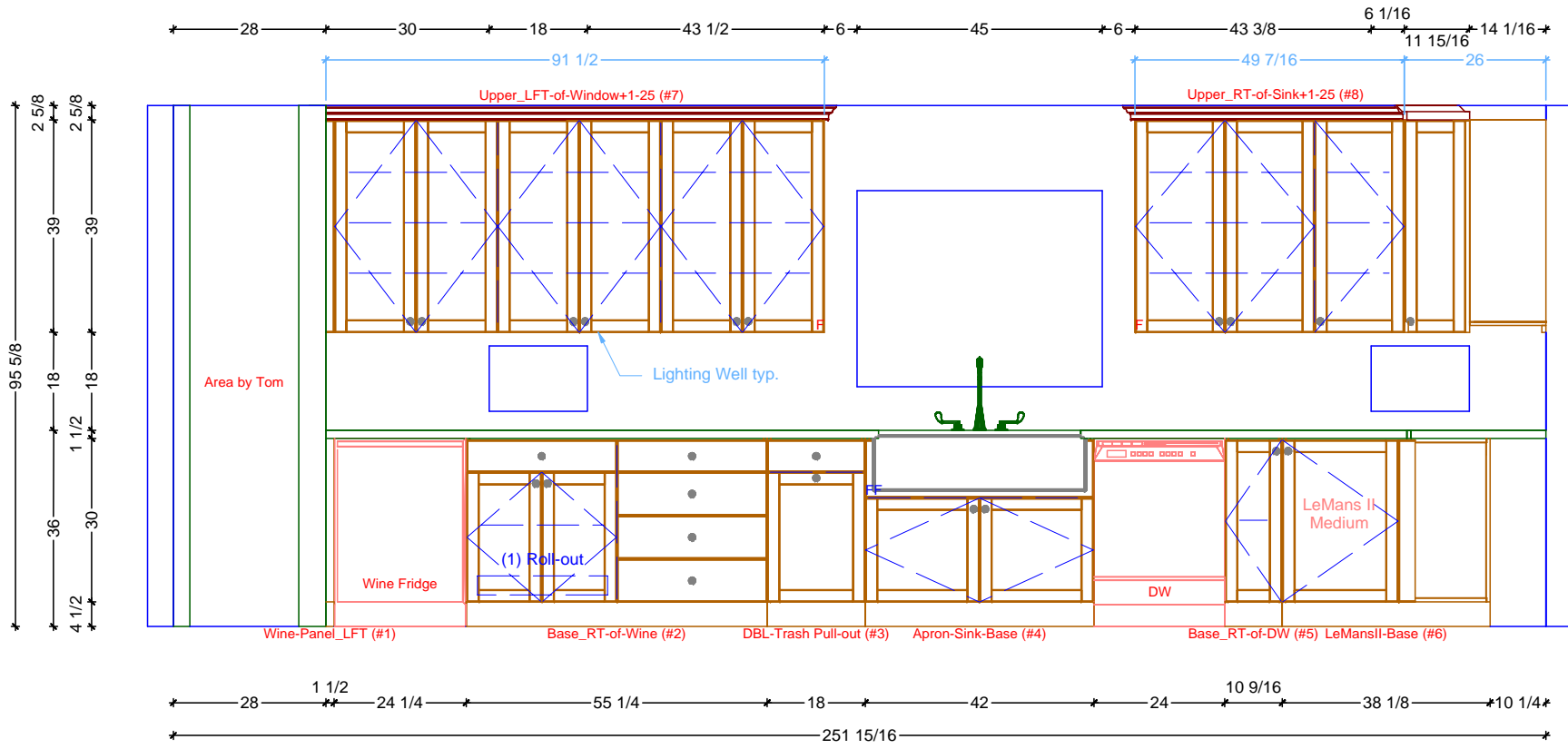
251 15/16
 28 30 18 43 1/2 6 45 6 43 3/8 6 1/16
 1 1/2
 28 24 1/4 55 1/4 18 42 24 10 9/16 38 1/8 10 1/4



 **KITCHEN CABINETRY FLOOR PLAN**
 SCALE: 3/8" = 1' 0"

Classic Bath Designs, Inc.
 11544 Sheldon St., Sun Valley, CA 91352
 818.767.1144 fax: 818.767.1278

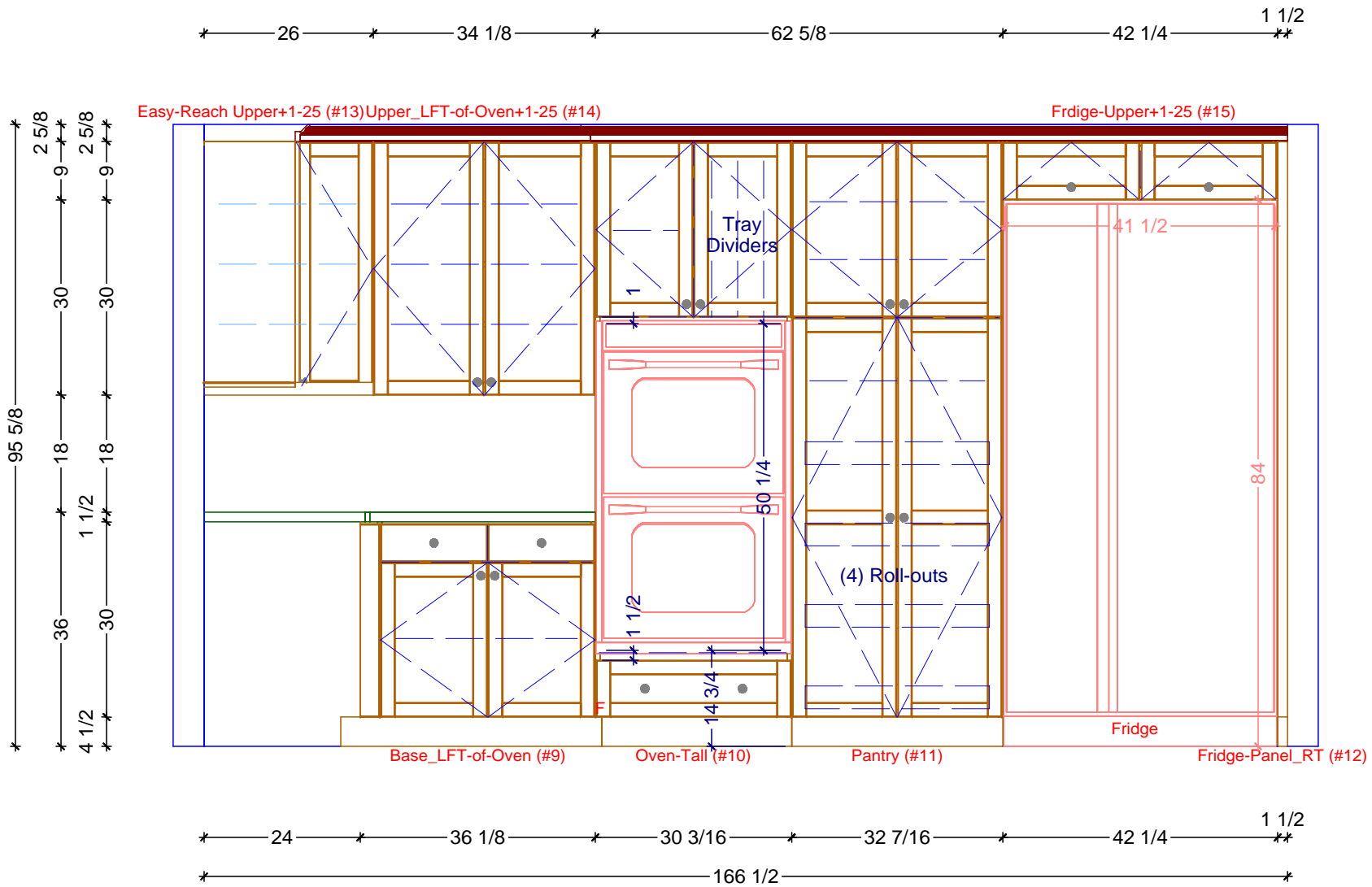
Cust: Blackwell for Corbina	PO# KITCHEN	Scale: As Noted	KITCHEN	K.O
Approved _____	Job: FL-S_PreFIN/PG_IntEB:PreFIN	Size: A	Dr By: Brian 01/03/2018	



1 KITCHEN ELEVATION - SINK WALL
 SCALE: 3/8" = 1' 0"

Classic Bath Designs, Inc.
 11544 Sheldon St., Sun Valley, CA 91352
 818.767.1144 fax: 818.767.1278

Cust: Blackwell for Corbina		PO# KITCHEN	Scale: As Noted	KITCHEN		K.1
Approved _____	Job: FL-S_PreFIN/PG_IntEB:PreFIN		Size: A	Dr By: Brian	01/03/2018	



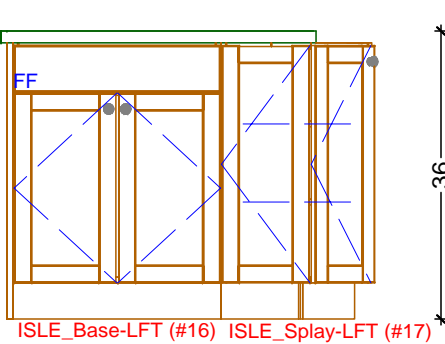
1 KITCHEN ELEVATION - FRIDGE/OVEN WALL
 SCALE: 1/2" = 1' 0"

Classic Bath Designs, Inc.
 11544 Sheldon St., Sun Valley, CA 91352
 818.767.1144 fax: 818.767.1278

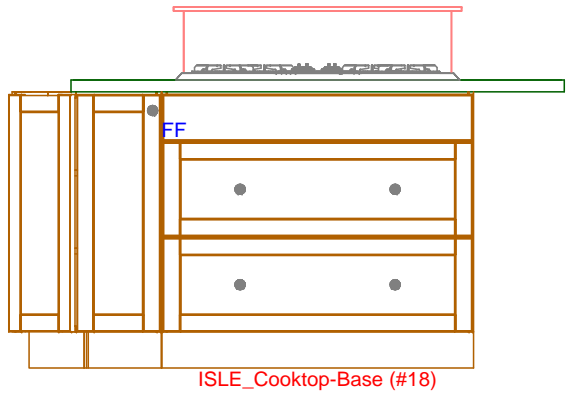


Cust: Blackwell for Corbina		PO# KITCHEN	Scale: As Noted	KITCHEN		K.2
Approved _____	Job: FL-S_PreFIN/PG_IntEB:PreFIN	Size: A	Dr By: Brian	01/03/2018		

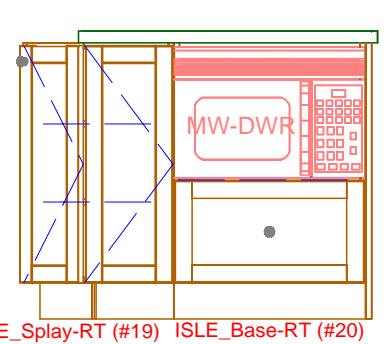
36
36
4 1/2
1 1/2
30



26 7 19/32 11 1/4
37 1/4



10 23/32 39 10 23/32
60 15/32

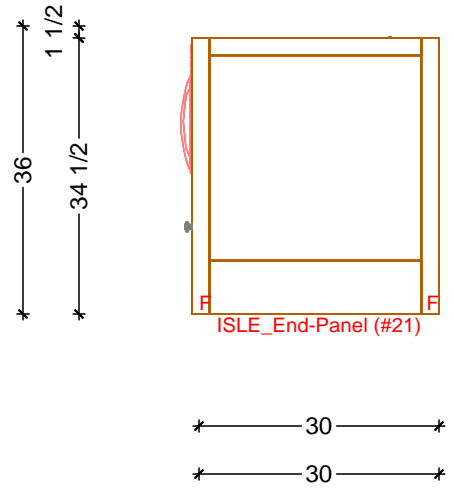


7 19/32 24 11 1/4
35 1/4

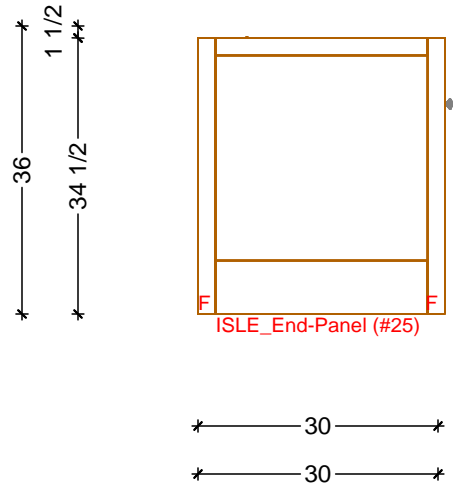
1 KITCHEN ELEVATION - ISLE-FRONT
SCALE: 1/2" = 1' 0"

2 KITCHEN ELEVATION - ISLE-FRONT
SCALE: 1/2" = 1' 0"

3 KITCHEN ELEVATION - ISLE-FRONT
SCALE: 1/2" = 1' 0"



4 KITCHEN ELEVATION - ISLE-END
SCALE: 1/2" = 1' 0"



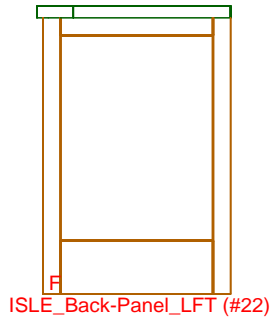
5 KITCHEN ELEVATION - ISLE-END
SCALE: 1/2" = 1' 0"

Island Cabinetry in PreFIN/Alder

Classic Bath Designs, Inc.
11544 Sheldon St., Sun Valley, CA 91352
818.767.1144 fax: 818.767.1278

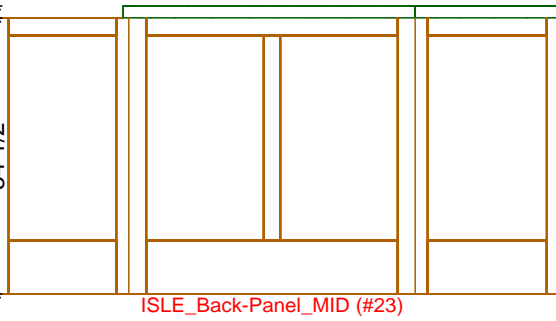
Cust: Blackwell for Corbina	PO# KITCHEN	Scale: As Noted	KITCHEN	K.3
Approved _____	Job: FL-S_PreFIN/PG_IntEB:PreFIN	Size: A	Dr By: Brian 01/03/2018	

36
 36
 $34 \frac{1}{2}$
 $1 \frac{1}{2}$



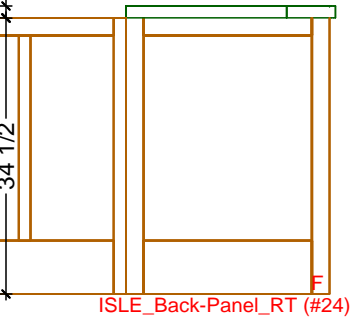
$22 \frac{11}{16}$
 $22 \frac{11}{16}$

36
 36
 $34 \frac{1}{2}$
 $1 \frac{1}{2}$



$1 \frac{19}{32}$ $1 \frac{19}{32}$
 $35 \frac{13}{16}$
 $35 \frac{13}{16}$

36
 36
 $34 \frac{1}{2}$
 $1 \frac{1}{2}$



$24 \frac{11}{16}$
 $24 \frac{11}{16}$

1 KITCHEN ELEVATION - ISLE-BACK
 SCALE: 1/2" = 1' 0"

2 KITCHEN ELEVATION - ISLE-BACK
 SCALE: 1/2" = 1' 0"

3 KITCHEN ELEVATION - ISLE-BACK
 SCALE: 1/2" = 1' 0"

Classic Bath Designs, Inc.
 11544 Sheldon St., Sun Valley, CA 91352
 818.767.1144 fax: 818.767.1278



Cust: Blackwell for Corbina

PO# KITCHEN

Scale: As Noted

KITCHEN

Approved _____

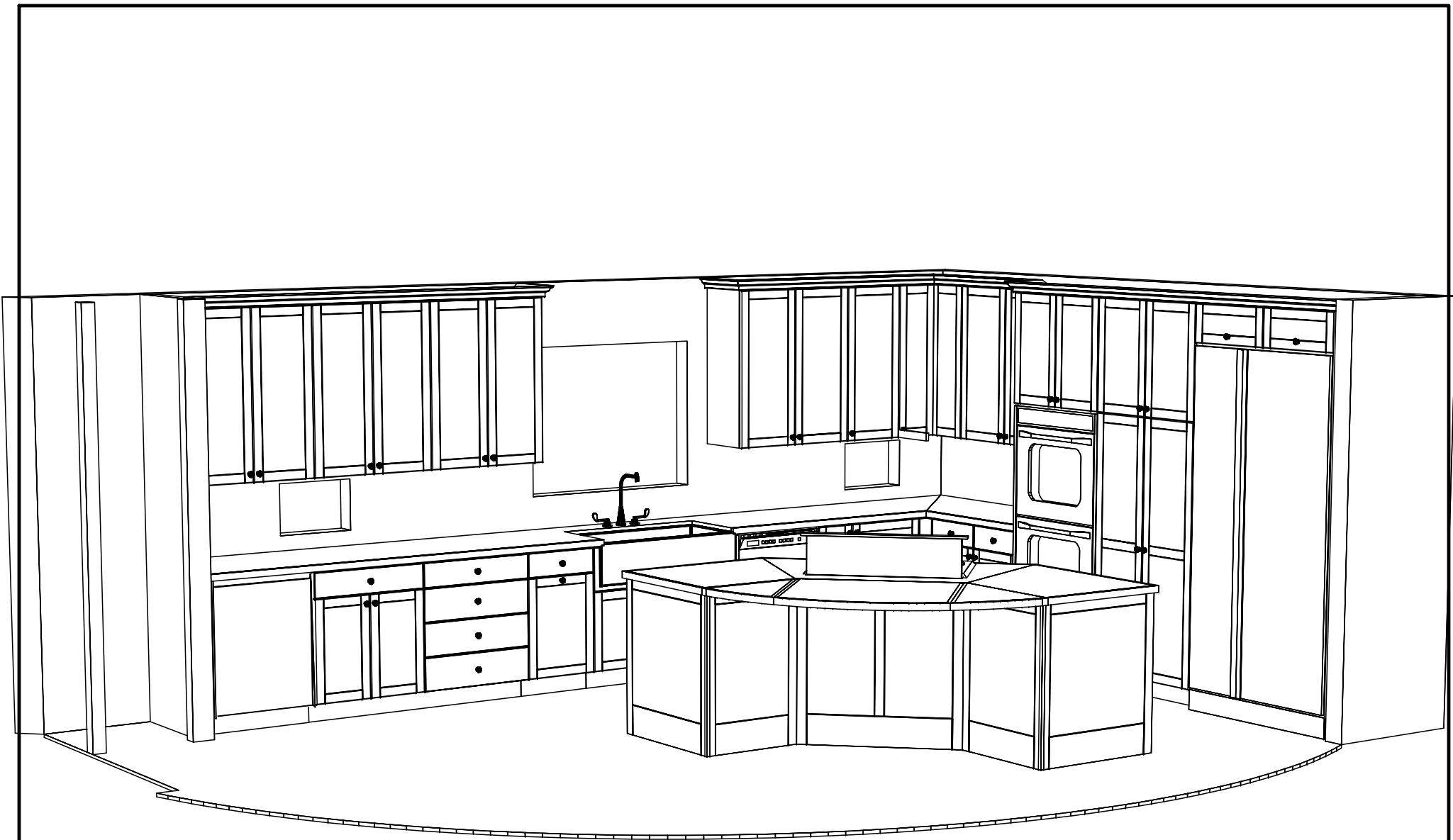
Job: FL-S_PreFIN/PG_IntEB:PreFIN

Size: A

Dr By: Brian

01/03/2018

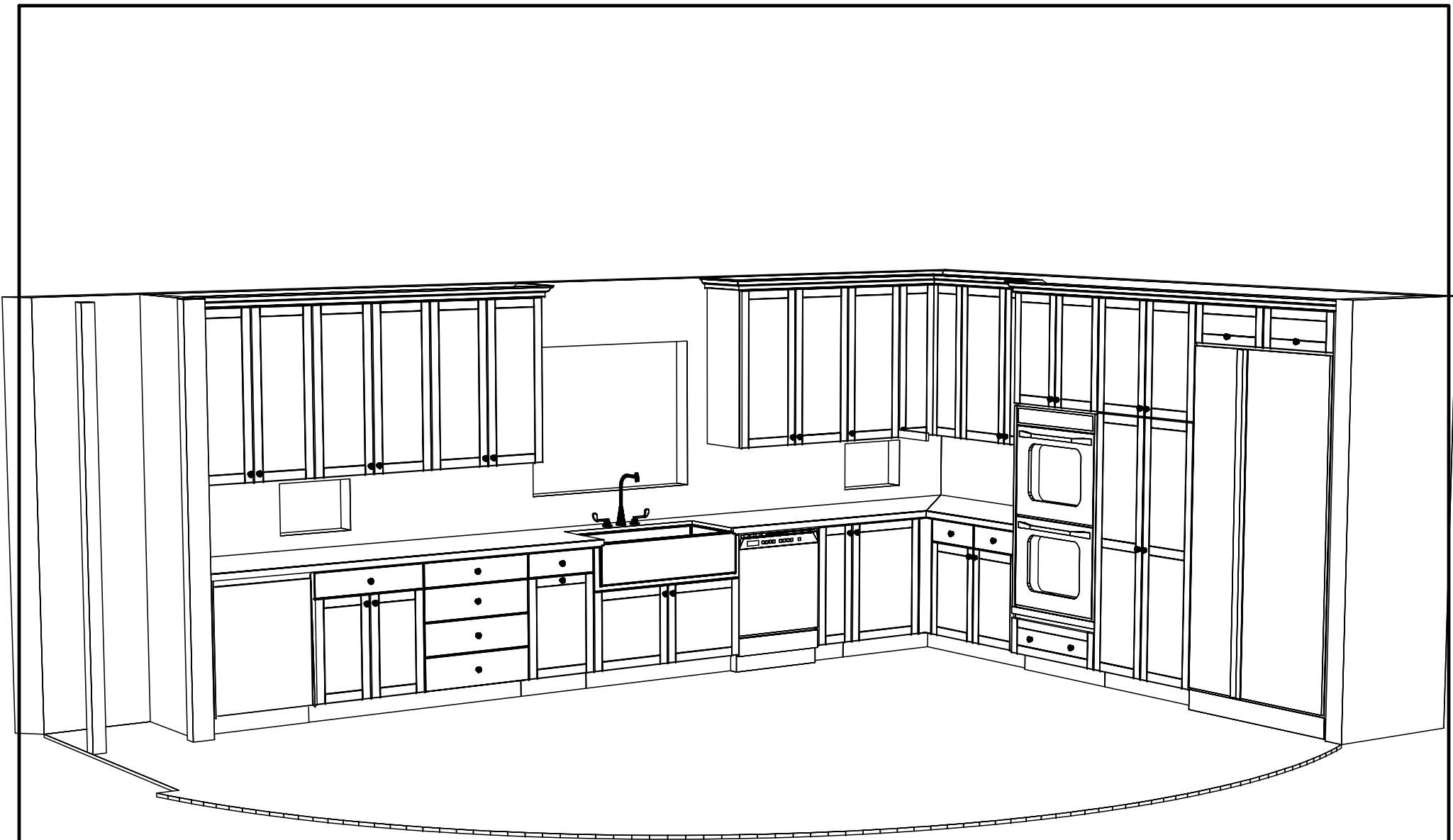
K.4



Classic Bath Designs, Inc.
 11544 Sheldon St., Sun Valley, CA 91352
 818.767.1144 fax: 818.767.1278



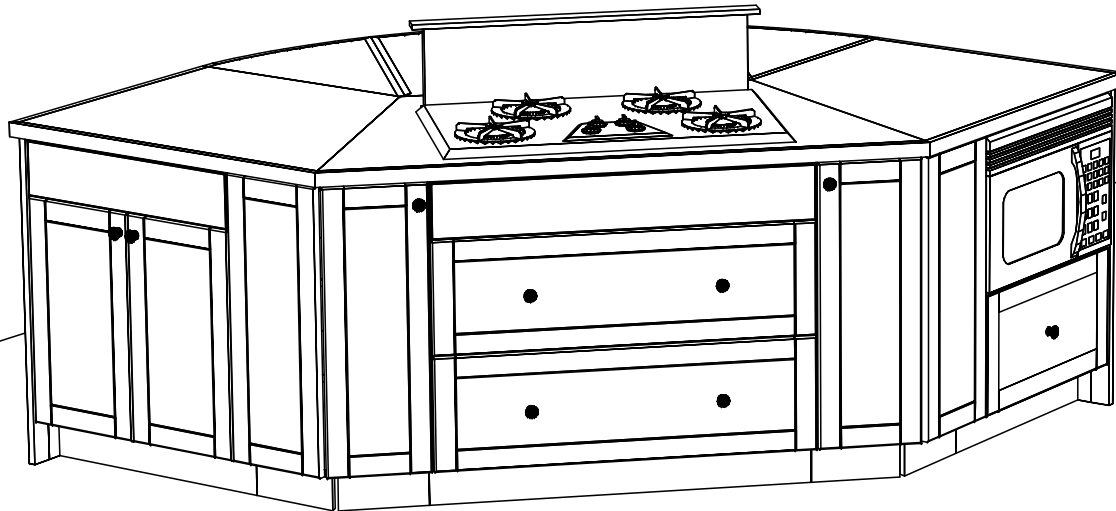
Cust: Blackwell for Corbina	PO# KITCHEN	Scale: As Noted	KITCHEN	Persp
Approved _____	Job: FL-S_PreFIN/PG_IntEB:PreFIN	Size: A	Dr By: Brian	



Classic Bath Designs, Inc.
 11544 Sheldon St., Sun Valley, CA 91352
 818.767.1144 fax: 818.767.1278



Cust: Blackwell for Corbina	PO# KITCHEN	Scale: As Noted	KITCHEN	Persp
Approved _____	Job: FL-S_PreFIN/PG_IntEB:PreFIN	Size: A	Dr By: Brian	



Classic Bath Designs, Inc.
 11544 Sheldon St., Sun Valley, CA 91352
 818.767.1144 fax: 818.767.1278



Cust: Blackwell for Corbina

PO# KITCHEN

Scale: As Noted

KITCHEN

Approved _____

Job: FL-S_PreFIN/PG_IntEB:PreFIN

Size: A

Dr By: Brian

01/03/2018

Persp