

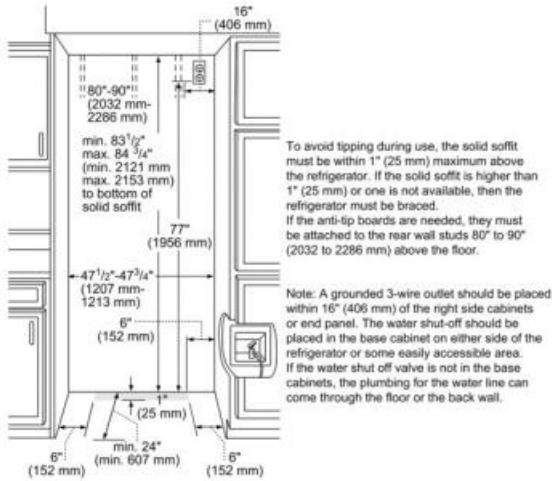


### **Design**

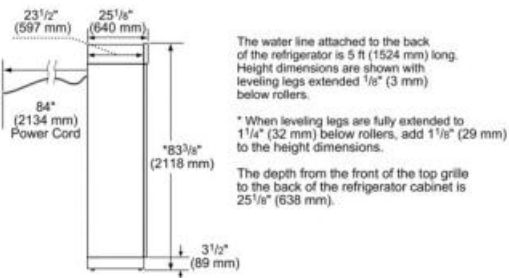
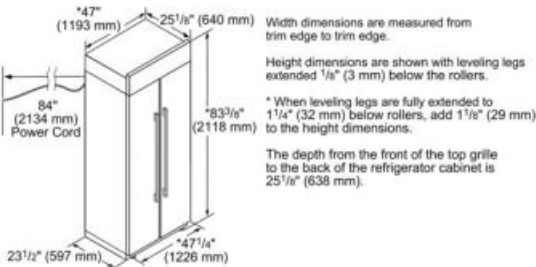
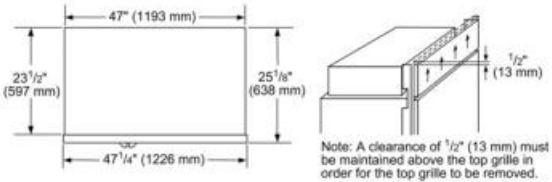
- Timeless built-in stainless steel refrigerator
- Professional Handle Design

### **Performance**

- Electronic controls for precise temperature management
- FlexTemp® Drawer optimized for fish, meat and produce
- Crisper Drawers
- Gallon door bins
- Frameless glass shelves
- Height adjustable glass shelves
- All metal freezer baskets
- Filtered ice-maker
- SuperCool - Chills food quickly
- Sabbath mode
- Door open alarm
- NO\_FEATURE Cu. Ft.



Top Grille Clearance



Frequency (Hz)	60
Approval certificates	CSA, UL
Net weight (lbs)	575
Gross weight (lbs)	637
Refrigerator gross capacity (cu.ft.)	19
Freezer gross capacity (cu.ft.)	11
Humidity control drawers	No
Number of door bins - freezer	6
Number of shelves - freezer	3
Water filter replacement indicator	Yes
Reversible door hinge	No