

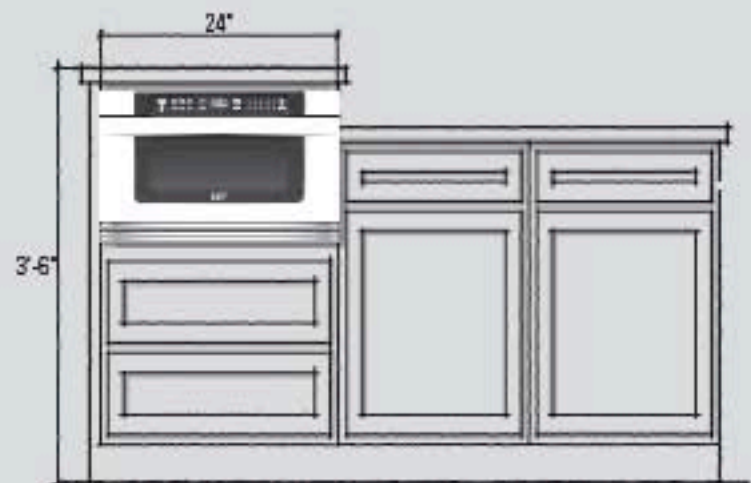
Always check the Installation Instructions for the specific model you are using. This Microwave Drawer can be installed below any electric or gas wall oven.

\* Can also be installed using an electrical outlet in an adjacent cabinet. Always check electrical codes for requirements.

## IDEAS



The trend is toward using freestanding furniture in the kitchen that includes built-in appliances. Why not design a piece of furniture with a 24" built-in Sharp Microwave Drawer in your next project?



Manufacturers now offer many optional arrangements. Raised cabinets that elevate appliances for easy access are becoming more common. A built-in Microwave Drawer in one of these raised cabinets creates an ideal functional work area.