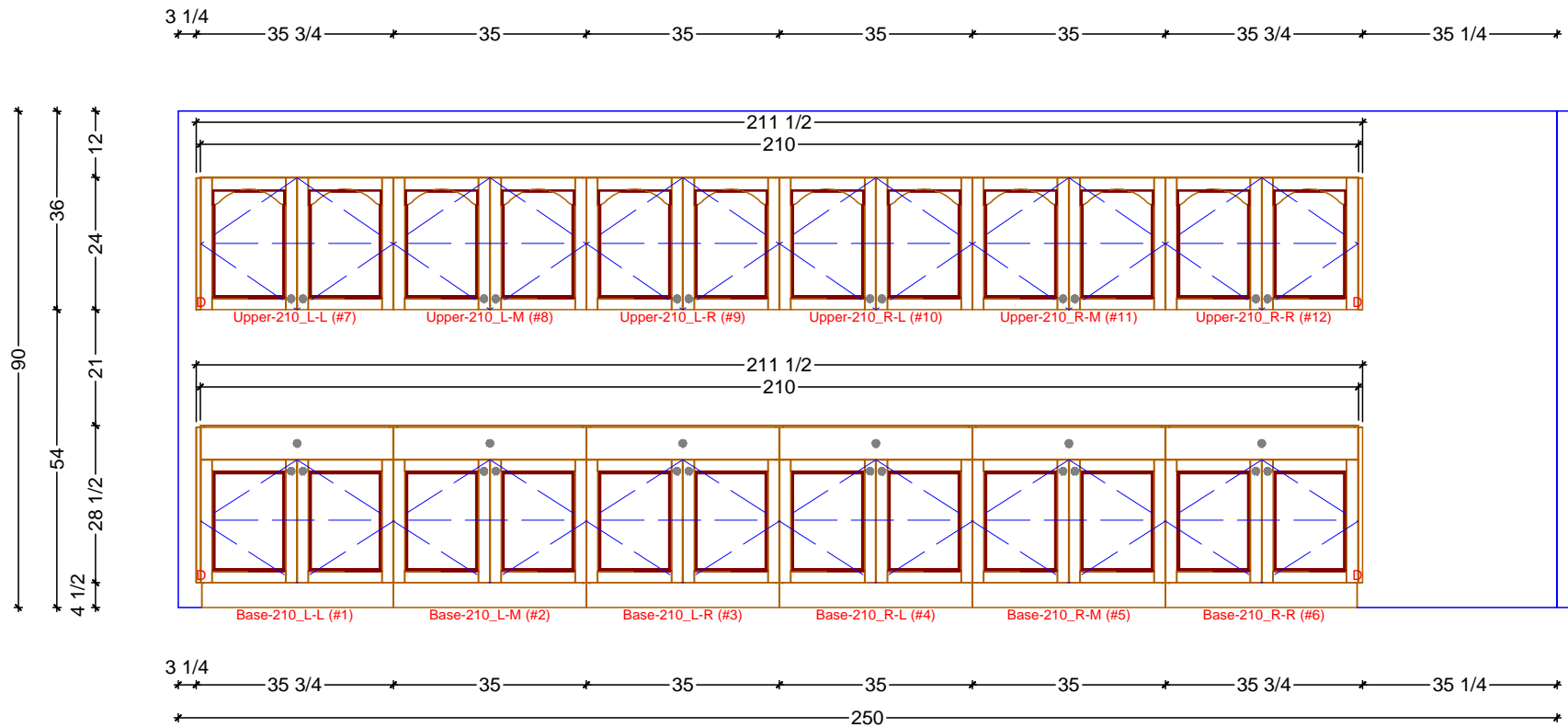

**CABINERY FLOOR PLAN**  
 SCALE: 3/8" = 1' 0"

**Classic Bath Designs, Inc.**  
 11544 Sheldon St., Sun Valley, CA 91352  
 818.767.1144 fax: 818.767.1278



|                            |   |                 |                 |             |
|----------------------------|---|-----------------|-----------------|-------------|
| Cust: Rousseau for Mallard |   | PO# SngFamDwell | Scale: As Noted | Room        |
| Approved _____             | Job: FL-S_MelPrnt/Beech:perSample_IntEB:MelPrnt | Size: A         | Dr By: Brian    | 07/18/2014  |
|                            |   |                 |                 | <b>Cb.0</b> |



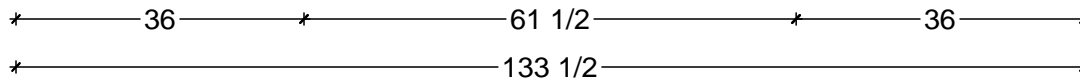
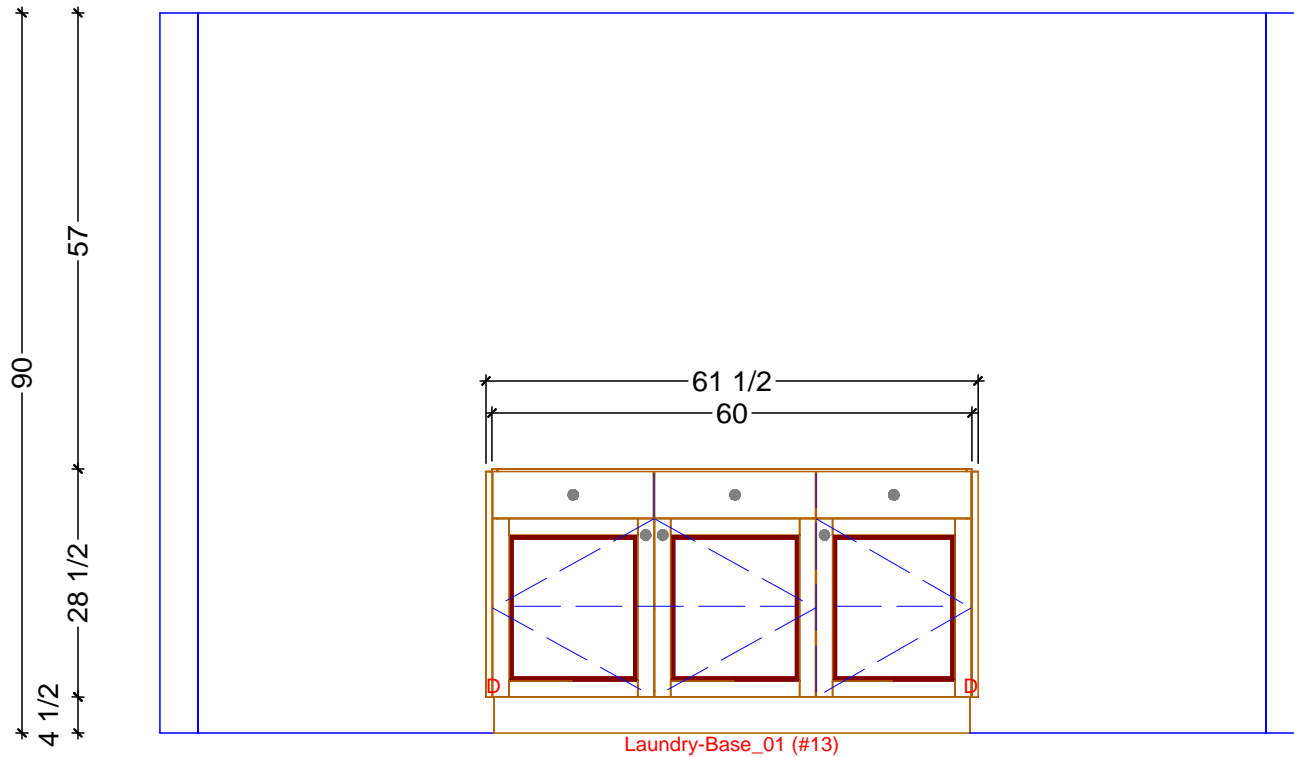
**1** CABINETRY ELEVATION  
 SCALE: 3/8" = 1' 0"

**Classic Bath Designs, Inc.**  
 11544 Sheldon St., Sun Valley, CA 91352  
 818.767.1144 fax: 818.767.1278



|                            |   |                 |                 |            |
|----------------------------|---|-----------------|-----------------|------------|
| Cust: Rousseau for Mallard |   | PO# SngFamDwell | Scale: As Noted | Room       |
| Approved _____             | Job: FL-S_MelPrnt/Beech:perSample_IntEB:MelPrnt | Size: A         | Dr By: Brian    | 07/18/2014 |

**Cb.1**



1

CABINERY ELEVATION

SCALE: 1/2" = 1' 0"

**Classic Bath Designs, Inc.**  
 11544 Sheldon St., Sun Valley, CA 91352  
 818.767.1144 fax: 818.767.1278



Cust: Rousseau for Mallard

PO# SngFamDwell

Scale: As Noted

Room

Approved \_\_\_\_\_

Job: FL-S\_MelPrnt/Beech:perSample\_IntEB:MelPrnt

Size: A

Dr By: Brian

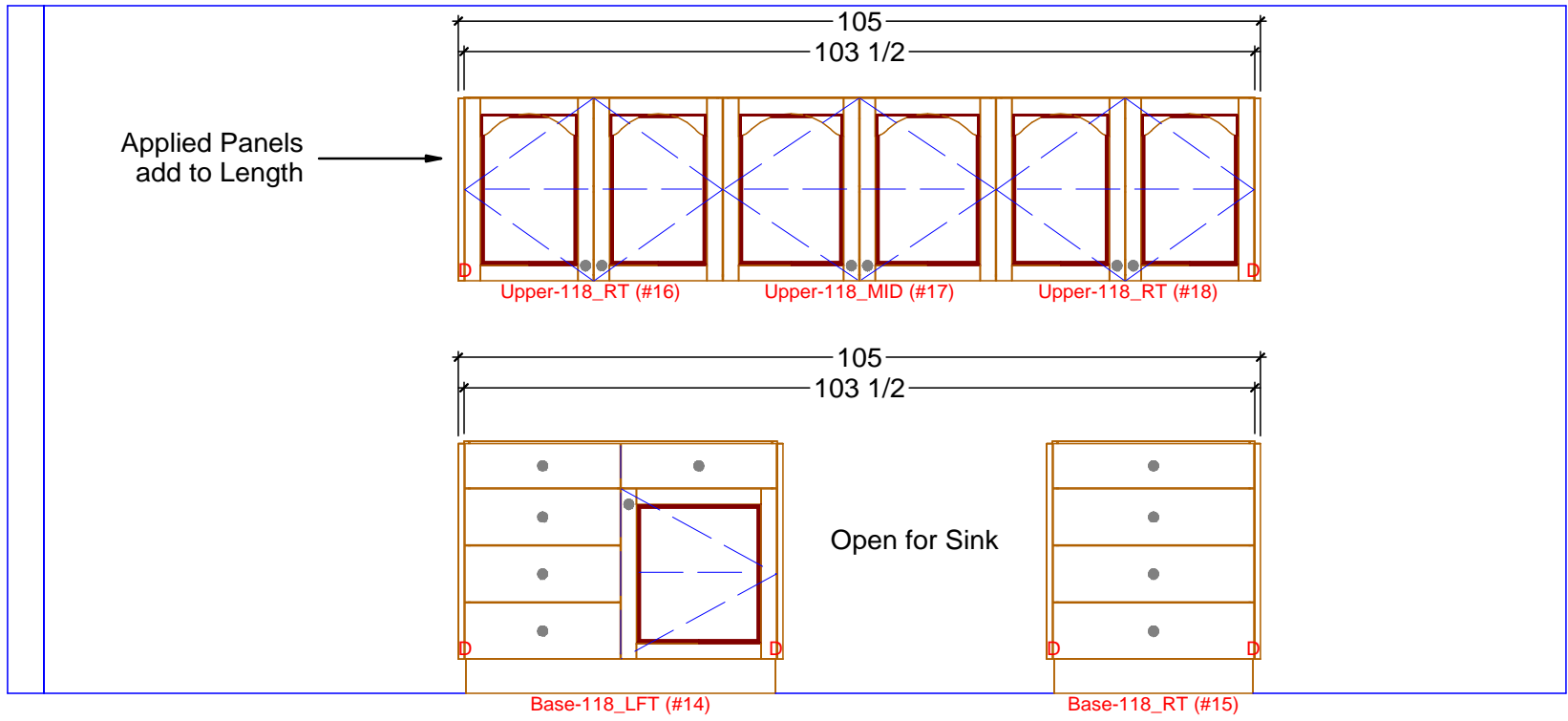
07/18/2014

**Cb.2**

54 1/4      34 5/8      35 3/4      34 5/8      40

90  
 54  
 4 1/2  
 28 1/2  
 21  
 24  
 12

Applied Panels  
 add to Length



54 1/4      42 1/2      34 1/2      28      40  
 199 1/4

**1** CABINETRY ELEVATION  
 SCALE: 1/2" = 1' 0"

**Classic Bath Designs, Inc.**  
 11544 Sheldon St., Sun Valley, CA 91352  
 818.767.1144 fax: 818.767.1278

|                            |   |                 |                         |
|----------------------------|---|-----------------|-------------------------|
| Cust: Rousseau for Mallard | PO# SngFamDwell                                 | Scale: As Noted | Room                    |
| Approved _____             | Job: FL-S_MelPrnt/Beech:perSample_IntEB:MelPrnt | Size: A         | Dr By: Brian 07/18/2014 |

**Cb.3**