

648PROG



## FEATURES

Dual refrigeration, plus a third evaporator dedicated just to the roomy crisper drawers

Clear-view, triple-pane and UV-resistant glass door

Over 30 cu. ft. of storage (18.5 refrigerator, 11.7 freezer)

Microprocessor control for peak performance

Stainless steel construction for decades of use

"Soft bright" interior lighting for superior visibility

Automatic ice maker with advanced water filtration system

Exterior temperature display for easy reading

Rigorously tested in our U.S. manufacturing facilities to ensure decades of use

Exceptional 24/7 support from Madison, WI-based Customer Care team

Easy-sliding bins

Tough-and-glide crisper drawer seals tight

Adjustable shelves and dividers for flexible organization

Auto-close door for maximum refrigeration

Flip-up grille for easy maintenance access

## ACCESSORIES

Egg Container

Refrigerator Drawer Dividers

90° door stop

Stainless steel front and side kickplates

Stainless steel slide-out refrigerator bin

Stainless steel side panels and top for freestanding application

Replacement water filter

Accessories are available through an authorized Sub-Zero dealer. For local dealer information, visit [subzero-wolf.com/locator](http://subzero-wolf.com/locator).



## PRODUCT DETAILS

### REFRIGERATOR

- One glass crisper lid
- One stationary glass shelf
- Two adjustable stainless steel slide-out bins
- Three adjustable glass shelves
- Interchangeable drawer dividers

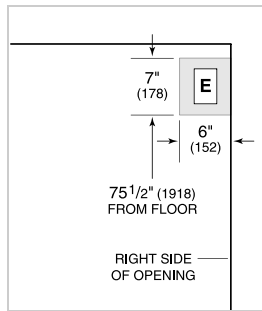
### FREEZER

- One stationary stainless steel shelf
- Three adjustable stainless steel shelves
- Stainless steel ice bucket
- Automatic ice maker

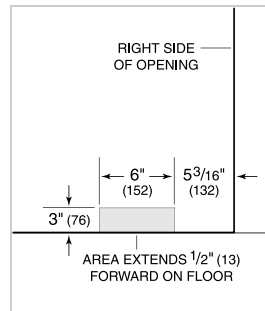
**PRODUCT SPECIFICATIONS**

Model	648PROG
Dimensions	48"W x 84"H x 24"D
Door Clearance	30 3/4"
Weight	875 lbs
Refrigerator Capacity	18.5 cu. ft.
Freezer Capacity	11.7 cu. ft.
Electrical Supply	115 VAC, 60 Hz
Electrical Service	15 amp dedicated circuit
Receptacle	3-prong grounding-type

**ELECTRICAL**



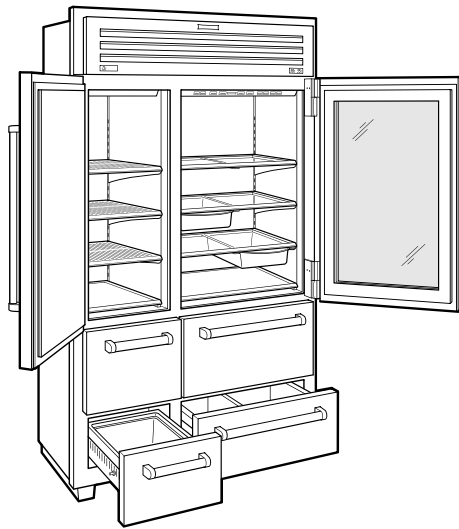
**PLUMBING**



**NOTE:**

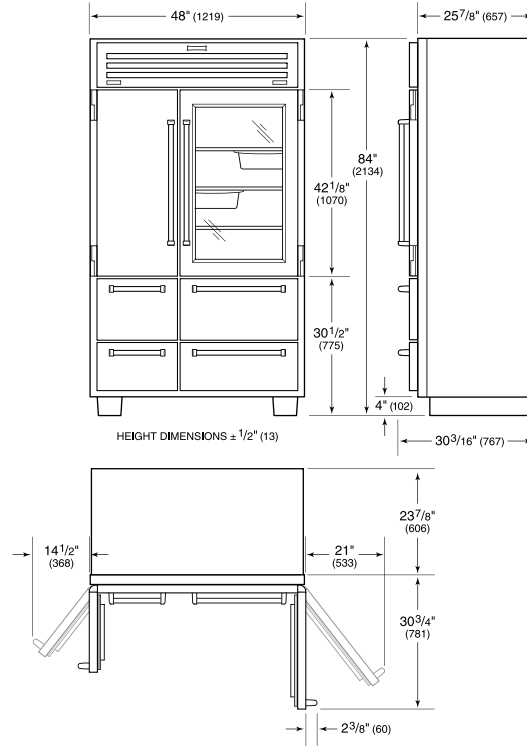
Dimensions in parenthesis are in millimeters unless otherwise specified

**INTERIOR VIEW**

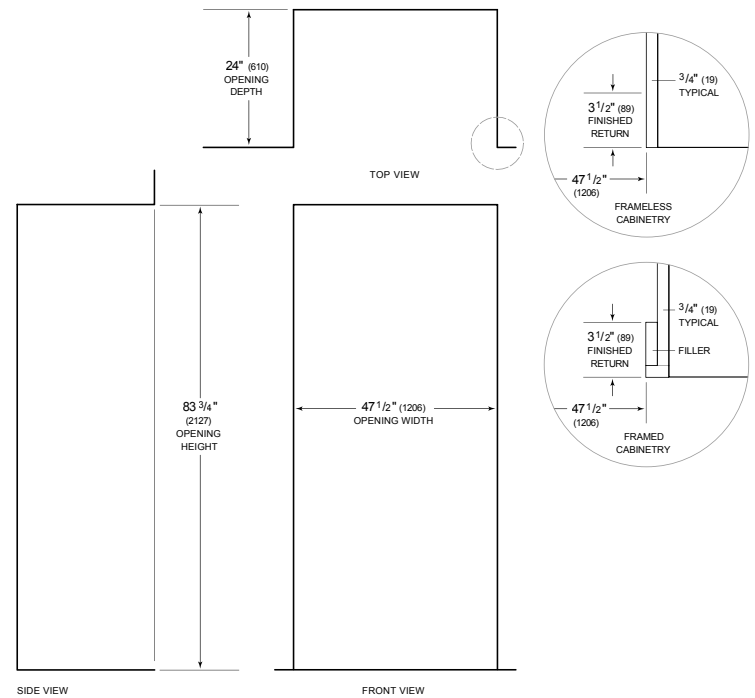


This illustration is intended for interior reference only and may not represent the exterior of the model being specified.

**DIMENSIONS**



**STANDARD INSTALLATION**



NOTE: 3 1/2" (89) finished returns will be visible and should be finished to match cabinetry