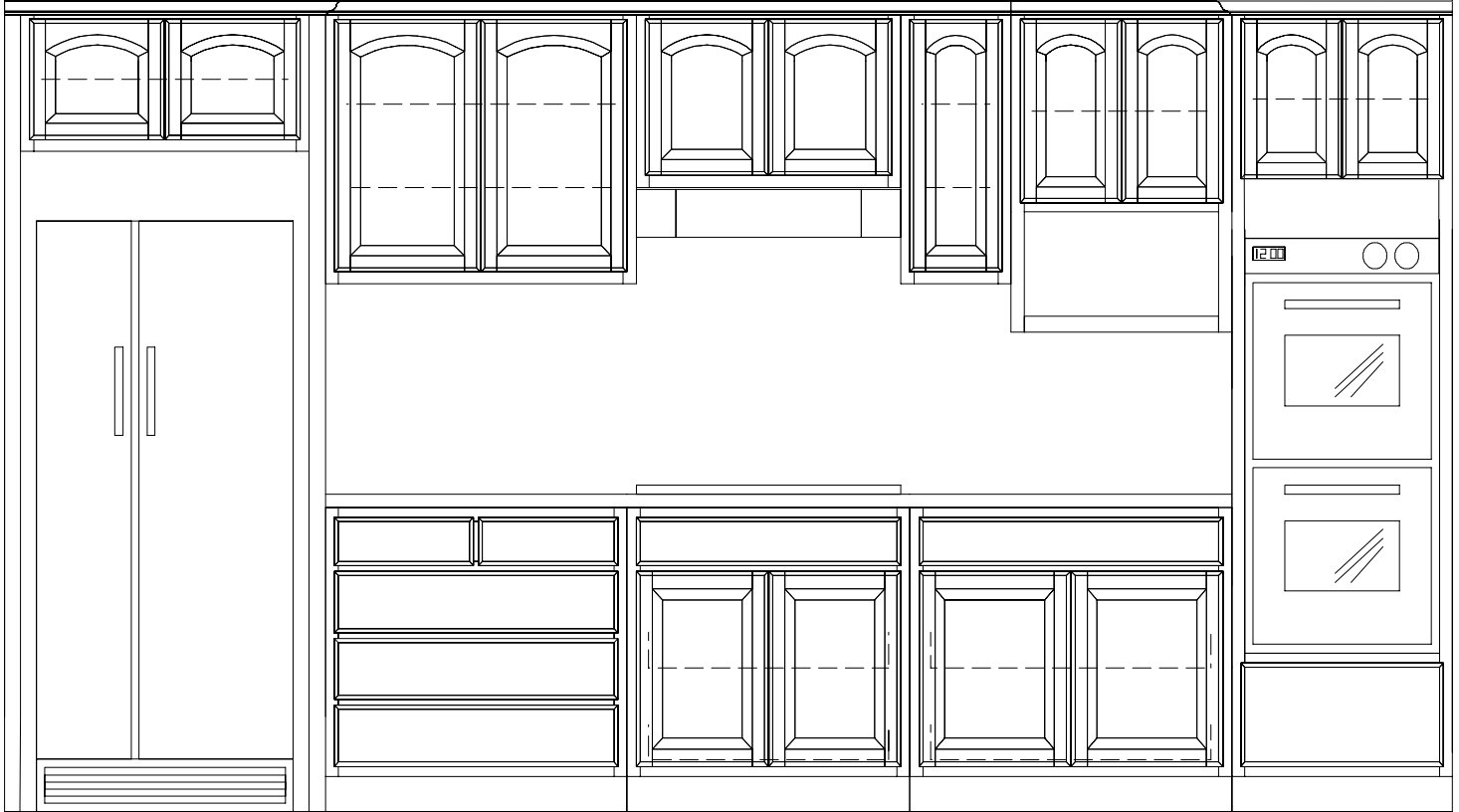


CUSTOM KITCHENS, HOME OFFICES, ENTERTAINMENT CENTERS, & BARS



THE FOLLOWING MATERIAL PRICING IS PROVIDED FOR YOUR CONVENIENCE AND REFERENCE. IT SHOULD BE USED FOR **KITCHENS, HOME OFFICES, ENTERTAINMENT CENTERS & BAR CABINETS**. SINCE OUR CABINETS ARE MANUFACTURED TO CUSTOM SPECIFICATIONS, THERE ARE MANY DIFFERENT OPTIONS TO CONSIDER. WE WILL BE HAPPY TO QUOTE YOUR PROJECT.

CUSTOM KITCHENS REQUIRE SUBSTANTIAL EXPERTISE TO COMPLETE IN A PROFESSIONAL MANNER. WE OFFER AN EXTENSIVE SELECTION OF SERVICES, INCLUDING "FIELD" MEASURING, COMPUTERIZED ON-SITE DESIGN, CUSTOM CAD DRAWINGS, AND PROFESSIONAL INSTALLATION. PLEASE CALL US WITH ANY QUESTIONS OR FAX YOUR PRELIMINARY INFORMATION.

THE LISTED PRICES ARE FOR FACE FRAME CONSTRUCTION WITH 1/2" OVERLAY OR FRAMELESS CONSTRUCTION WITH FULL OVERLAY. THE FOLLOWING ADJUSTMENTS CAN BE MADE TO THE CABINET PRICES (BEFORE ADDING FOR ACCESSORIES):

ADD 5 % FOR PRINTED MELAMINE INTERIORS.

ADD 10% FOR ALL PLYWOOD INTERIORS.

ADD 15% FOR **FULL INSET** DOORS AND DRAWERS.

ADD 20% FOR FULL INSET DOORS AND DRAWERS WITH BEADED FRAMES.
(INSET DOORS ONLY AVAILABLE WITH FACE FRAME CONSTRUCTION)

DEDUCT 20% FOR UNFINISHED. ADD 20% FOR A GLAZED FINISH.

SAND THROUGH, DISTRESSING, AND SPECIALTY FINISHES

ARE QUOTED ON A CASE-BY-CASE BASIS.

DEDUCT 30% FROM GROUP I PRICES FOR CABINETS WITH NO DOORS.

BASE CABINETS

(PRICED PER LINEAL INCH)

| DOOR STYLE | PREMIUM GRADE | | | BUILDERS SERIES | |
|------------|----------------|----------------------------|-----------------|-----------------|-------------|
| | PAINTED WHITE | STAINED OR WHITEWASHED | | PAINTED WHITE | STAINED OAK |
| | MDF & HARDWOOD | ALDER, OAK, BIRCH, or PINE | CHERRY or MAPLE | | |
| GROUP I | \$30.90 | \$35.60 | \$40.35 | \$26.30 | \$30.25 |
| GROUP II | \$29.40 | \$34.50 | \$38.95 | \$25.45 | \$29.30 |
| GROUP III | \$29.00 | \$33.45 | \$38.40 | \$24.65 | 28.40 |
| GROUP IV | \$33.20 | \$38.40 | \$43.40 | N/A | N/A |

THESE PRICES ARE FOR TYPICAL KITCHEN BASES (34 1/2" TALL AND 24" DEEP) WITH DOORS & FALSE FRONTS ONLY. CONCEALED HINGES AND ADJUSTABLE SHELVING ARE INCLUDED.

UPPER CABINETS & TALL CABINETS

(PRICED PER SQUARE FOOT)

| DOOR STYLE | PREMIUM GRADE | | | BUILDERS SERIES | |
|------------|----------------|----------------------------|-----------------|-----------------|-------------|
| | PAINTED WHITE | STAINED OR WHITEWASHED | | PAINTED WHITE | STAINED OAK |
| | MDF & HARDWOOD | ALDER, OAK, BIRCH, or PINE | CHERRY or MAPLE | | |
| GROUP I | \$85.75 | \$98.65 | \$111.60 | \$72.90 | \$83.90 |
| GROUP II | \$81.30 | \$93.50 | \$105.70 | \$69.10 | \$79.50 |
| GROUP III | \$74.00 | \$85.10 | \$96.15 | \$62.90 | \$72.40 |
| GROUP IV | \$98.65 | \$113.40 | \$128.30 | N/A | N/A |

THESE PRICES ARE FOR 12" DEEP CABINETS WITH DOORS. CONCEALED HINGES AND ADJUSTABLE SHELVING ARE INCLUDED.
 ADD 5% FOR CABINETS UP TO 16" DEEP.
 ADD 10% FOR CABINETS UP TO 24" DEEP.
 ADD 15% FOR CABINETS UP TO 30" DEEP.

SEE THE FOLLOWING PAGES FOR ACCESSORY PRICING.

Add-ons & Accessories

CABINET MODIFICATIONS

| | |
|---|----------------|
| EXTRA DEPTH (Base cabinets greater than 24") | \$ 89.00 EACH |
| CUT-BACKS (90 degrees) | \$ 89.00 EACH |
| ANGLES (CLIPS, 45°, 60°, 135°, ETC.) | \$ 119.00 EACH |
| CURVED CORNERS (3", 4", OR 6" radius, or Curved Aprons) | \$ 199.00 EACH |

DRAWERS

CHOOSE ONE OF THE FOLLOWING DRAWER OPTIONS:

| | |
|--|----------------|
| DRAWERS OR PULL-OUTS (1/2" finished plywood, 3/4 extension side mount slides) | \$ 99.00 EACH |
| DRAWERS OR PULL-OUTS (1/2" finished plywood, full extension side mount slides) | \$ 119.00 EACH |
| DRAWERS OR PULL-OUTS (1/2" solid wood, dovetailed, 3/4 extension side mount slides)..... | \$ 139.00 EACH |
| DRAWERS OR PULL-OUTS (1/2" solid wood,dovetailed, full extension side mount slides) | \$ 159.00 EACH |
| DRAWERS OR PULL-OUTS (1/2" solid wood, dovetailed, 3/4 extension bottom mount slides).... | \$ 179.00 EACH |
| DRAWERS OR PULL-OUTS (1/2" solid wood, dovetailed, full extension bottom mount slides) ... | \$ 199.00 EACH |
| ADD BLUMOTION (Only available on full extension bottom mount slides) | \$ 199.00 EACH |

ACCESSORIES

ANY OF THESE ACCESSORIES CAN BE ADDED TO OUR CUSTOM CABINETS

| | |
|---|---------------|
| TILT-OUT APRONS (full length, white plastic tray) | \$ 69.00 EACH |
| PLASTIC SILVERWARE INSERTS (removable dividers) | \$ 69.00 EACH |
| PLASTIC SPICE TRAY INSERTS (removable dividers) | \$ 69.00 EACH |
| PLASTIC UTENSIL TRAY INSERTS (removable dividers) | \$ 69.00 EACH |
| WOOD SILVERWARE INSERTS (fixed dividers) | \$ 89.00 EACH |
| WOOD SPICE TRAY INSERTS (fixed dividers) | \$ 89.00 EACH |
| WOOD UTENSIL TRAY INSERTS (fixed dividers) | \$ 89.00 EACH |
| BREAD DRAWER COVER (sliding clear plastic) | \$ 89.00 EACH |
| SLIDE-OUT TOWEL RACK (mount behind sink base doors) | \$ 89.00 EACH |

All pricing is suggested retail & subject to change without notice.

Classic Bath Designs, Inc.

SUN VALLEY • CALIFORNIA

JUNE 1, 2005
(818) 767-1144
(818) 767-1278 FAX

MORE ACCESSORIES

| | | |
|---|-----------|------|
| LAZY SUSAN (two-tiered, white plastic) | \$ 299.00 | EACH |
| 1/2 MOON LAZY SUSAN (two-tiered, white plastic with slides, 13-1/4" min. opening) | \$ 349.00 | EACH |
| SUPER LAZY SUSAN (wooden trays) | \$ 399.00 | EACH |
| PULL-OUT PANTRY (full height, for pantry cabinets) 24" max. width | \$ 429.00 | EACH |

| | | |
|--|-----------|---------|
| APPLIANCE GARAGE (pull up tambour) | \$ 99.00 | SQ. FT. |
| TRASH SINGLE DRAWER (one 35-qt. plastic can 11-1/2" min. I.D.) | \$ 159.00 | EACH |
| DOUBLE TRASH DRAWER (two 35-qt. plastic cans 16-1/2" min. I.D.) | \$ 199.00 | EACH |
| TRAY DIVIDERS (removable) | \$ 149.00 | SET |
| SPICE RACKS (adj. shelves on upper door/priced per door) | \$ 199.00 | EACH |
| PLATE RACK | \$ 199.00 | SET |
| MINI-PANTRY (full extension pull out for base or upper cabinets) | \$ 249.00 | EACH |
| CAN RACKS (adj. shelves on pantry door/priced per door) | \$ 299.00 | EACH |
| IRONING BOARD (pull-out, concealed in drawer) | \$ 399.00 | EACH |
| HOOD (30" x 24" or 36" x 24" flared front with galley rail) | \$ 499.00 | EACH |

| | | |
|--|-----------|------|
| CUTTING BOARD AND KNIFE BLOCK (concealed, in addition to drawer cost)..... | \$ 159.00 | EACH |
| LOOSE 3/4" CUTTING BOARDS (maximum size is 4 square feet) | \$ 89.00 | EACH |
| BASE END PANELS (2" x 24" x 34-1/2" max.) | \$ 99.00 | EACH |
| REFRIGERATOR END PANELS (2" x 24" x 96" max.) | \$ 189.00 | EACH |

| | | |
|--|-----------|-----------|
| SINGLE PANE GLASS DOOR PANEL (plain glass included) | \$ | NO CHARGE |
| FRENCH LITE DOORS (per lite) | \$ 19.00 | EACH |
| BEVELED GLASS DOOR PANEL (square only) | \$ 19.00 | EACH |
| BEVELED GLASS DOOR PANEL (curved side or end) | \$ 79.00 | EACH |
| STEMWARE RACK ON BOTTOM OF UPPER CABINET | \$ 79.00 | SQ. FT. |
| WINE RACK LATTICE STYLE (24" x 42" max. Add on, in place of doors) | \$ 149.00 | EACH |
| LIGHT GRIDS (Flat, diffusers not included) | \$ 22.50 | SQ. FT. |
| LIGHT GRIDS (Boxed, diffusers not included) | \$ 27.00 | SQ. FT. |

All pricing is suggested retail & subject to change without notice.

MORE ACCESSORIES

| | | | |
|---|----|------------|---------|
| 5 PC. OR ROUTED DWR. FRONTS (6-1/2" minimum height for most styles) | \$ | 19.00 | EACH |
| FIXED RAISED PANELS (on cabinet backs or ends to match doors) | \$ | SEE PG. D4 | |
| RECESSED FINISHED PANELS (cabinet backs or ends) | \$ | SEE PG. D4 | |
| APPLIANCE PANELS (to match cabinet doors) | \$ | SEE PG. D4 | |
| MATCHING WOOD TOPS (for base cabinets) | \$ | SEE PG. D4 | |
| BUTCHER BLOCK (1-3/8" thick finger-joint maple) | \$ | 59.00 | SQ. FT. |
| BAR TOP WITH 5" BAR NOSING (OAK only) | \$ | 99.00 | LN. FT. |

| | | | |
|---|----|--------|------|
| HEAVY-DUTY TOUCH LATCHES | \$ | 19.00 | EACH |
| C.D. DWR. INSERTS (6-1/2" H opening x 5" min. width w/ 3-1/4" drawer sides) | \$ | 59.00 | EACH |
| VIDEO DWR. INSERTS (5-1/2" H opening x 7-3/4" min. width w/ 3-1/4" drawer sides) | \$ | 59.00 | EACH |
| CASSETTE DWR. INSERTS (3-1/2" H opening x 4-3/4" min. width w/ 2" drawer sides) | \$ | 59.00 | EACH |
| LOCKS (single cylinder cam locks) | \$ | 79.00 | EACH |
| KEYBOARD TRAY & MOUSE (KV57105P-BLK) | \$ | 249.00 | EACH |
| T.V. PULL-OUT SWIVEL (FR815 150 #S MAX) | \$ | 299.00 | EACH |
| T.V. PULL-OUT SWIVEL (FR855 450 #S MAX) | \$ | 529.00 | EACH |
| HALOGEN LIGHT KITS (3 lights with transformer) | \$ | 299.00 | EACH |
| POCKET DOORS (retractable into cabinet requires 2-1/2" each side with partitions) | \$ | 399.00 | EACH |

Although this list is quite long, there are other accessories that are available.

If you do not see what you want or need, let us know.

We will be happy to check on your particular item and provide a price.